

OSHER LIFELONG LEARNING INSTITUTE

WINTER/SPRING 2024  
**CURRICULUM  
GUIDE**



**OLLI**  
*the Lowcountry's*  
LIFELONG LEARNING COMMUNITY

IN PERSON • LIVE ON ZOOM • LIVESTREAM  
OLLI DIGITAL LIBRARY

SERVING  
BEAUFORT • BLUFFTON  
HILTON HEAD • JASPER COUNTY

**[www.oli.uscb.edu](http://www.oli.uscb.edu)**  
(843) 208-8247 | [oli@uscb.edu](mailto:oli@uscb.edu)

OSHER  
LIFELONG  
LEARNING  
INSTITUTE

**USCB**  
UNIVERSITY OF SOUTH CAROLINA BEAUFORT



## OLLI FREQUENTLY ASKED QUESTIONS

### WHAT IS OLLI?

OLLI is the acronym for the prestigious Osher Lifelong Learning Institute offered at 125 Universities throughout the country. OLLI provides intellectual, social, and cultural enrichment opportunities in a climate that fosters friendship and a mutual sharing of ideas and life experiences.

### MISSION

The Osher Lifelong Learning Institute (OLLI) at the University of South Carolina Beaufort (USCB) is devoted to creating and sustaining a robust and thriving lifelong learning community specifically developed for adults 50 and older through intellectual and social programs.

### WHY JOIN OLLI?

People who are active, engaged in their communities, and who continue learning throughout their lives feel more productive and purposeful, and are healthier and happier. Members share common bonds of intellectual curiosity and the experience of their generation. They are self-motivated learners, eager to share opinions, knowledge, and expertise with humor and mutual respect. OLLI offers opportunities to meet new friends, make contacts, and develop connections. In addition to lectures, members can attend social events, take field trips, and participate in a myriad of other short courses that better one's quality of life, providing a personal sense of health, engagement, and overall well-being.

### WHO TEACHES THE COURSES?

OLLI's philosophy is "teach your passion." Our volunteer instructors are fellow lifelong learners, just like you. They may teach topics related to those they pursued before retirement or may share their knowledge in a new area of interest.

### HOW MUCH DOES IT COST?

OLLI memberships are \$40 annually. Membership grants you access to all OLLI programs across our three regions. There are three terms within a year, Winter/Spring, Summer, and Fall. Members can choose between an UNLIMITED or PAYGO option. Unlimited allows a member to take as many classes within that term as they wish for just \$125. PAYGO allows members to pay per class for just \$15. Summer classes are FREE for OLLI members.

### HOW DO I BECOME AN OLLI MEMBER?

You can sign up online at [www.oli.uscb.edu](http://www.oli.uscb.edu) or visit any of the three OLLI locations across the Lowcountry.

**Registration opens January 9 and runs through May 10**

*Cover photo taken by OLLI member and instructor, Lucy Rosen*

## MEET YOUR OLLI STAFF



**Annette Claus**  
Program Coordinator  
Hilton Head Island



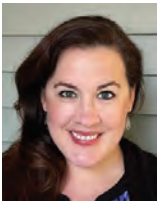
**Marianne Conti**  
Program Coordinator  
Bluffton



**Frankie Korosi**  
Program Coordinator  
Hilton Head Island



**CJ Oremus**  
Registrar  
Bluffton



**Amanda Moore**  
Program Coordinator  
Beaufort



**Terry Reed**  
Member Services  
Bluffton



**MJ Simmons**  
Program Coordinator  
Beaufort



**Andréa Sisino**  
Director

## Contact Information

**Registration Website** - [www.oli.uscb.edu](http://www.oli.uscb.edu)

**Informational Website** - [www.uscb.edu/oli](http://www.uscb.edu/oli)

**Phone** - (843) 208-8247

**Email** - [oli@uscb.edu](mailto:oli@uscb.edu)

**Mailing address** - 1 University Blvd., Rm. 161, Bluffton, SC 29909

**Follow us on Facebook** - [www.facebook.com/olliatuscb](http://www.facebook.com/olliatuscb)

Offices on all three campuses

## Membership

All OLLI members will receive a membership card by mail upon joining or renewing.

### Annual Membership - \$40

- Membership into 1 of 125 OLLI communities nationwide
- Ability to participate in OLLI courses during the Fall, Winter/Spring and Summer terms.
- Free “pop-up” OLLI lectures and Summer programs
- USCB campus library membership and access to research
- Discounted meals at USCB dining facilities
- Discounted tickets to USCB Chamber Music concerts
- Discounted fees to USCB Continuing Education classes
- Participation in the OLLI Lowcountry Community Concert Band
- Free USCB campus student parking permit (\$25 value)

## Term Fees

**PAYGO** (\$15 per course) Pay for each class separately upon registration through the term. OLLI courses, regardless of the number of sessions, are \$15 for the entire course whether it is in-person, or Zoom. \$8 per course if viewed on the OLLI Digital Library.

**Upgrade to Unlimited at any time and apply already paid class fees to the upgrade.**

**UNLIMITED** (\$125) allows you to take as many live in-person and/or live Zoom courses as you wish through the term, and have access to the OLLI Digital Library throughout the current term.

## CANCELLATION POLICY

A \$10.00 cancellation fee applies to only OLLI courses that have additional fees (supply, trip, tour fee).

**See page 41 for details.**

# OLLI DIGITAL LIBRARY

USCB OLLI MEMBERS HAVE ACCESS TO OVER 70 PREVIOUSLY TAPED OLLI PROGRAMS THAT WERE RECORDED FROM 2021-2023. FROM HISTORY TO CULINARY, HEALTH TO ECONOMICS, AND ECOLOGY TO LITERATURE.

## NEW FOR 2024!

PROGRAMS OFFERED IN THE CURRENT WINTER/SPRING TERM WILL BE AVAILABLE ON THE DIGITAL LIBRARY IN THE 2024 FALL TERM.

### ART & CULTURE

---

- SALVADOR DALI
- HISTORY OF MODERN ART

### BUSINESS

---

- UNDERSTANDING THE BASICS OF BITCOIN AND BLOCKCHAIN

### COMMUNITY INTEREST

---

- WHAT'S WRONG WITH OUR SCHOOLS?
- LOWDOWN FROM A LOWCOUNTRY LOCAL
- AGING IN PLACE

### COMPUTERS

---

- SOCIAL MEDIA FOR THE SOCIALLY CHALLENGED
- YOU CAN RUN BUT YOU CAN'T HIDE: BIG TECH

### CULINARY ARTS

---

- ITALIAN FOOD & CULTURE
- WINE ACADEMY 101
- EAT PLANTS: LIVE COOKING DEMONSTRATIONS

### ECOLOGY

---

- SOUTH CAROLINA SEA TURTLES
- GRAY'S REEF NATIONAL MARINE SANCTUARY
- ALLIGATORS OF THE LOWCOUNTRY
- DEEP SEA WORLD
- MYSTERIES OF THE LOWCOUNTRY WATERWAYS

### GARDENING

---

- TO PRUNE OR NOT TO PRUNE
- PALMS IN THE SOUTH
- PERENNIAL PLANTS
- WEEDS WORRYING YOU?

### GOVERNMENT

---

- SCHOOLHOUSE BURNING
- THE WIDOW SPY: THE AUTHOR SHARES HER STORY

### HISTORY

---

- CAMP SAXTON AND THE FIRST SOUTH CAROLINA VOLUNTEER INFANTRY
- SOUTH CAROLINA - AN ABRIDGED HISTORY
- A CENTURY AGO : THE YEAR WAS 1922
- THE FIRST AFRICANS TO VIRGINIA 1619-1699

### HISTORY CON'T

---

- RECONSTRUCTION: THE SECOND AMERICAN FOUNDING AND ITS LEGACIES
- ELEANOR ROOSEVELT - A PERSONAL PORTRAIT
- VIETNAM: ONE MAN'S PERSPECTIVE
- THE ORIENT EXPRESS
- ONLY HOPE: MY MOTHER AND THE HOLOCAUST BROUGHT TO LIGHT
- WHO KILLED KING TUT?
- THE INSTITUTION OF SLAVERY
- REVEALING THE GRAND CANYON
- RED SHIRTS, WHITE HOODS, AND ELECTION BLUES: 1876
- TRIANGLE FACTORY FIRE: KILLED 146 AND SAVED MILLIONS
- MARIE CURIE: A BRILLIANT OBSERVER
- 1927: THE YEAR THAT SYMBOLIZED THE ROARING 20S
- THE LARGEST ART HEIST IN HISTORY
- JURY OF ONE
- UNCOVERING HISTORY: CLOTILDA THE LAST SLAVE SHIP
- A CHAUTAUQUA EXPERIENCE: EDITH RUSSEL, TITANIC SURVIVOR
- ATHENA MILITANT: THE IMPORTANCE OF 19TH CENTURY FEMALE MILITARY
- DEM BUMS
- MURDER INC.: A DARK SIDE OF BROOKLYN CRIME

# OLLI DIGITAL LIBRARY

## HEALTH & MEDICINE

---

- THE 5 LANGUAGES OF LOVE: UNDERSTANDING ALZHEIMER'S
- SLEEP AND INSOMNIA: PRACTICAL TIPS FOR A GOOD NIGHT SLEEP

## INTEREST GROUPS

---

- SECRETS OF BIRD PHOTOGRAPHY
- ELECTRIC CARS: IS NOW A GOOD TIME TO BUY ONE?
- DRUGS AND SEX: THE SIN BUSINESS

## INTERNATIONAL STUDIES

---

- RUSSIA INVADES UKRAINE IMPERIALIST WAR IN THE INFORMATION AGE
- COERCED CRIMINALITY IN THE NORTHERN TRIANGLE: UNDERSTANDING CRIMINAL GANGS
- THE ANATOMY OF A MAN-MADE FAMINE: CHINA'S GREAT LEAP FORWARD
- RUSSIA VS UKRAINE: IMPLICATIONS FOR NATO

## LEGAL

---

- UNITED STATES BILL OF RIGHTS: KNOW YOUR RIGHTS

## LITERATURE

---

- LEGAL TRAPS AND TRICKS IN SHAKESPEARE
- SHAKESPEARE: 1623 AND THE FIRST FOLIO

## MUSIC

---

- BROADWAY'S MUSICAL THEATRE: AN ART FORM
- THE BUSINESS OF BROADWAY
- TOM FOOLERY: THE WORDS AND MUSIC OF TOM LEHRER
- RUMBLE: AN AMERICAN MUSIC DISCUSSION
- DUKE ELLINGTON

## PERSONAL GROWTH

---

- BEING AN INTROVERT
- BRINGING YOUR HAPPY MOJO

## RELIGION

---

- THE CRUSADES
- CELTIC CHRISTIANITY

## SCIENCE

---

- ASTRONOMY: HOW THE COSMOS WORKS
- ANTARCTICA SCIENCE AT THE BOTTOM OF THE WORLD AND WHY IT MATTERS
- ARTEMIS: BACK TO THE MOON
- QUAKING, SHAKING EARTH: PLATE TECTONICS, EARTHQUAKES AND VOLCANOES
- UNDERSTANDING NET ZERO CARBON BY 2050
- UNDERSTANDING GENES, GENOME EDITING & ETHICAL DECISIONS

## TRAVEL

---

- POLAR BEARS OF HUDSON BAY

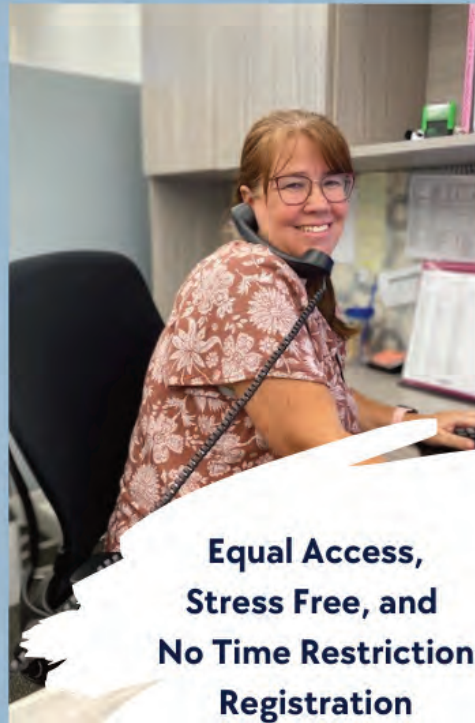
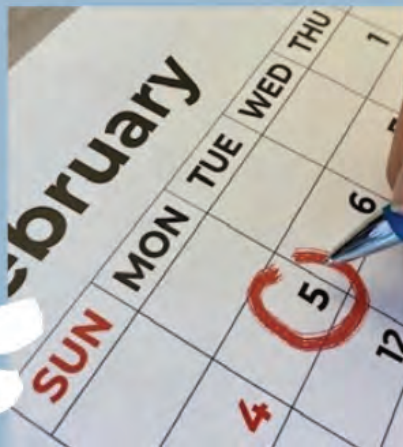
## STEPS TO WATCH A RECORDING FROM THE OLLI DIGITAL LIBRARY

- GO TO [WWW.OLLI.USCB.EDU](http://WWW.OLLI.USCB.EDU) AND LOG INTO YOUR ACCOUNT
- SELECT THE BUTTON "BROWSE COURSES" ON THE LEFT-HAND SIDE
- SCROLL AND CLICK ON THE CATEGORY "OLLI DIGITAL LIBRARY (ODL)"
- SELECT THE COURSE YOU'D LIKE TO VIEW AND CLICK ON ENROLL YOURSELF
- EITHER "SAVE TO CART AND SELECT MORE COURSES" OR "PROCEED TO CHECKOUT"
- COMPLETE THE CHECKOUT PROCESS TO RECEIVE A CONFIRMATION EMAIL CONTAINING THE WEBLINK(S)
- OPEN YOUR EMAIL AND LOCATE THE ENROLLMENT CONFIRMATION EMAIL FROM USCB OLLI
- CLICK ON THE URL LINK TO VIEW THE RECORDING
- SAVE THE EMAIL TO VIEW THE CLASS MULTIPLE TIMES THROUGHOUT THE TERM

## WHAT IS RANDOM DRAW REGISTRATION?



**Applies only to  
Limited Enrollment  
classes/tours**



**Equal Access,  
Stress Free, and  
No Time Restriction  
Registration**

Random Draw is the registration method used for limited enrollment courses including tours, culinary cooking classes, and other specialized courses. Courses that are limited enrollment are due to space limitations dictated by the program, venue, or instructor with the **random draw ensuring equal access to all OLLI members.**

- Register for limited enrollment classes anytime between **January 9 and February 4, 2024**
- Computer randomly selects members from the random draw pool on **February 5, 2024**
- OLLI staff contacts selected members via email and/or phone **February 5 – 7, 2024**
- Payment for PayGo or additional fees due by **February 9, 2024**

**If an OLLI member does not respond to the payment email or phone call by February 9, 2024, the member loses their first opportunity to participate and will be automatically added to the waitlist.**

**Don't give up!** For members who are not initially selected for a course, we encourage you to remain on the waitlist. Cancellations are common, and we often pull from the waitlist to fill available openings.

**You also may contact OLLI staff to check on available openings**

## MEMBERSHIP

Make sure your membership is current through the term otherwise you will not be able to register for classes beyond your membership expiration date.

## ART & CULTURE

### ART200: CERAMIC TILE AND SLAB CONSTRUCTION



3 Sessions | Tuesday, Thursday | Jan 23, Jan 25, Jan 30 | 1-3PM  
In-Person only | Beaufort campus

**Supply Fee \$30**

**Limited Enrollment – 8 (First Served Registration)**

Learn the ceramic hand-building technique of slab construction to construct a functional ceramic box and two decorative tiles in the USCB ceramics studio with Associate Professor of Art Joanna Angell. This hands-on experience will take you through the process of creating, glazing, and firing your creation.



**JOANNA ANGELL** is a multidisciplinary artist and an Associate Professor of Art at USCB where she teaches ceramics, printmaking, drawing, design, and senior exhibition. Joanna holds a B.A. in English from Drew University and an M.F.A. from the University of Georgia. Joanna's work is exhibited in solo and juried group exhibitions and is in collections in the United States and abroad.

### ART201: PAINT PARTY SPRING BLOOMS

1 Session | Friday | Feb 23 | 10AM-12N  
In-Person only | Beaufort campus



**Supply Fee - \$30**

**Limited Enrollment – 25 (Random Draw Registration)**

Join us for this fun spring flower paint party, where "budding" artists of all levels are welcome. No experience is necessary. All art supplies are provided. We will use acrylic paint on an 11" x 14" canvas and pre-sketched for those who prefer. We will be guided by local artist Camilla Pagliaroli, owner of Create with Camilla. Come ready to have fun and make new friends!



**CAMILLA PAGLIAROLI** owns *Create with Camilla* and teaches paint parties, art camps, and workshops for adults and children in the Lowcountry and online. She has exhibited in the United States and Italy and paints commissions on request.

### ART202: CALLIGRAPHY

1 Session | Monday | Feb 26 | 10AM-12N  
In-Person only | Beaufort campus

**Limited Enrollment – 20 (Random Draw Registration)**

Calligraphy is the art of beautiful writing. Students will learn basic pen strokes, which will produce a variety of results. Guided practice will be used to accomplish lower and uppercase letters, numbers, punctuation marks, and flourishes.

**NOTE:** Students are encouraged to bring any calligraphy pens or supplies they may have to this class. Pens will be available to purchase at the class for \$3.00. Exact change is requested.



**BARBARA KRAKEHL** is a retired educator who has found time to explore and enjoy art. She finds pleasure in sharing some of the many opportunities for art appreciation and experiences available in the local community.

### ART203: SKETCHBOOK DRAWING: FROM PHOTOS AND LIFE

1 Session | Tuesday | Mar 19 | 10AM-3:30PM  
In-Person only | Beaufort campus



### ART205: SKETCHBOOK DRAWING: FROM PHOTOS AND LIFE

1 Session | Friday | Mar 22 | 10AM-3:30PM  
In-Person only | Beaufort campus



**Supply Fee \$18**

**Limited Enrollment – 20 (Random Draw Registration)**

Workshop to help beginner and intermediate-skilled participants learn to see like an artist: Learn to draw what you see, not what you know. Participants will work in sketchbook format and learn (or relearn) two useful drawing techniques: contour and gesture. The instructor will provide many examples, demos, practice time, and feedback.

- The morning session will concentrate on blind contour and modified blind contour.
- The afternoon session will feature gesture and sustained gesture techniques.

**NOTE:** The class will break for a 90-minute lunch. This is the same class offered on different days.



**DICK BJORNSETH** is an award-winning artist/photographer featured in 14 solo shows and 45 other exhibitions around the country. He served 18 years as a Foundations professor at the Savannah College of Art and Design (SCAD).

## ART204: THE ZENTANGLE METHOD OF DRAWING

1 Session | Friday | Mar 22 | 10-11:30AM  
In-Person only | Bluffton campus

"Yoga for the brain. Meditation on paper. Mesmerizing repetition of marks and patterns." These are just a few of the ways Zentangles are described. The practice of Zentangles also proves everyone can draw. Students will be instructed in the methods created by Maria Thomas and Rick Roberts and will create "Artist Trading Cards," receive a Micron pen, and use Zentangle tiles to create individualized designs that are beautiful and expressive.

**NOTE:** There is a \$3.00 (cash) materials fee for this course due to the instructor on the day of the class.



**BARBARA KRAKEHL** is a retired educator who has found time to explore and enjoy art. She finds pleasure in sharing some of the many opportunities for art appreciation and experiences available in the local community.

## ART206: PAINT PARTY CERAMIC VASE

1 Session | Tuesday | Apr 09 | 1-3PM  
In-Person only | Beaufort campus

**Supply Fee \$30**

**Limited Enrollment – 25 (Random Draw Registration)**



Join us for fun while painting a beautiful 5-inch ceramic pot with decorative shells. Perfect for your coastal home. We will be guided by local artist Camilla Pagliaroli, owner of Create with Camilla. Come ready to have fun and make new friends!



**CAMILLA PAGLIAROLI** owns Create with Camilla and teaches paint parties, art camps, and workshops for adults and children in the Lowcountry and online. She has exhibited in the United States and Italy and paints commissions on request.

## ART207: A DAY IN THE LIFE OF A STUDIO ART MAJOR

1 Session | Wednesday | Apr 10 | 10AM-3PM  
In-Person only | Beaufort campus



See and learn about our USCB Senior Exhibition, where you will get a chance to meet the students who are at the

end of their 4 years of study in Studio Art. The program starts with the Printmaking students demonstrating their current work in Printmaking and techniques used in making linocuts, Japanese woodblock prints, etchings, and more. We'll break for lunch which will be on your own in downtown Beaufort. Afterward, gather in the Art Gallery to view the student exhibition and hear presentations about their works. Don't miss this opportunity to see the amazing work of our talented students.

**NOTE:** This class is free to OLLI members. OLLI will make a group reservation at a local restaurant or you may explore Beaufort on your own during the two-hour lunch break.



**JOANNA ANGELL** is a multidisciplinary artist and an Associate Professor of Art at USCB where she teaches ceramics, printmaking, drawing, design, and senior Exhibition. For a full biography, see ART200.

## ART208: AN ARCHITECTURAL TOUR OF PARIS

2 Sessions | Monday | Apr 15, Apr 22 | 1-3PM  
In-Person only | Bluffton campus



Professor Larson will discuss (with images) a number of significant buildings from Paris' history. These will include the Basilica of Saint-Denis, the first Gothic cathedral; Notre-Dame; Sainte-Chapelle; the Louvre and Tuileries Palaces; Paris Opera House; several department stores; Haussmann's redevelopment of the city (new streets, sewers, etc.); and a few buildings by Le Corbusier.



**GERALD LARSON** (Master of Architecture at the University of Michigan) is a Professor Emeritus of Architecture at the University of Cincinnati, where he taught architecture and architectural history for over 40 years. He is currently completing a book, "The Skyscraper and the White City," written as a prequel to Erik Larson's (no relation) best-seller "The Devil in the White City."



## BUSINESS AND FINANCE

### BUS200: BANK FAILURES AND STOCK MARKET CRASHES

1 Session | Monday | Apr 29 | 10-11:30AM  
In-Person only | Bluffton campus



We will take a close look at the events leading to the stock market crashes in 1929, 1987, 2000, 2008, and 2020s while examining the responses and economic consequences. We will examine the role of the Federal Reserve Bank, Federal Deposit Insurance Corporation (FDIC), and Securities Investors Protection Corporation (SIPC). Also discussed will be the Federal Reserve's Bank Term Funding Program created in response to recent bank failures.



**ROGER LOUISE** earned his B.S. in Criminal Justice with a minor in Paralegal Studies from the University of New Haven. In his 33-year career with Allstate Insurance, he served in management with their property and casualty division.

## COMMUNITY INTEREST

### COI200: OLLI BOOTCAMP - HILTON HEAD

1 Session | Monday | Jan 08 | 10:30AM-12:30PM  
In-Person only | Hilton Head campus



### COI201: OLLI BOOTCAMP – BEAUFORT

1 Session | Wednesday | Jan 10 | 10AM-12N  
In-Person only | Beaufort campus



### COI202: OLLI BOOTCAMP – BLUFFTON

1 Session | Wednesday | Jan 17 | 10AM-12:30PM  
In-Person only | Bluffton campus



Some things are changing in OLLI but no worries, we're here to help. Whether you are new to OLLI or a veteran member, we invite you to join the staff to take a deeper dive into some changes that are happening this term at USCB OLLI and at the national level.

**Part One:** Get to know the staff, learn about OLLI's founder, mission, changes to the National Resource Center, and the national and local course offerings.

**Part Two:** Become more familiar with the OLLI class registration website, course evaluations, the new Online Digital Library (ODL) experience, Zoom, live streaming, and communication methods.

**Part Three:** Take a guided tour of the USCB Bluffton campus to learn about the NEW amenities available to you including the library, dining areas, post office, campus bookstore, and OLLI Bus Stop.

**NOTE:** This class is free to OLLI members and guests. Wear comfortable walking shoes for the guided campus walking tour.

### COI203: HOLY CURIOSITY OF INQUIRY: WHAT IS REQUIRED FOR LEARNING IN SCHOOL (AND OTHER PLACES, TOO)

1 Session | Monday | Jan 22 | 10AM-12N  
In-Person, Zoom | Bluffton campus



If you were to write a definition of learning, what would it include? Why does the "drive to learn" seem so central to what it means to be human? What conditions are required for learning to occur? Building on the most recent work in neuropsychology and cognitive science, this course will summarize what is known about these big questions and provide an overview of the critical roles "exploration, inquiry, and art" play in building understanding and acquiring new skills at every level of development from infancy to adulthood.



**DR. BRUCE MARLOWE, Ph.D.** has 40 years of experience in education from K through Graduate Education, including teaching, administration, research, author, and speaking throughout the United States and internationally. Dr. Marlowe currently chairs the USCB Education Department and teaches Educational Psychology and Special Education.

### COI204: MOONSHINE MANIPULATION AND MURDER IN SOUTH CAROLINA

1 Session | Wednesday | Jan 24 | 10AM-12N  
In-Person only | Bluffton campus



This presentation revolves around award-winning author Michael DeWitt's recent book release, "The Fall of the House of Murdaugh." Join us as Michael discusses the Murdaugh case along with some insights from his months of investigative reporting and covering the trial

from start to finish, and even currently. This program includes a moderated interview with the author to get to know him as a local who was born and raised in Hampton, South Carolina. Learn about the impact on his beloved community and him by the Murdaugh family's fall from grace.

**NOTE:** Michael DeWitt will have his book available for sale and stay after for book signing.



**MICHAEL DEWITT** is an award-winning author and longtime editor of "The Hampton County Guardian." DeWitt was recently featured on "48 Hours" and "Dateline" for his professional reporting of the Murdaugh case and its impact on Hampton, South Carolina. He is an award-winning journalist and author. His books include "Wicked Hampton County," "Fall of the House of Murdaugh," and "Images of America - Hampton County," a history of his family home of nearly three centuries. His award-winning Southern humor column, "Southern Voices, Southern Stories," is published in newspapers nationwide. DeWitt served as historian, storyteller, and playwright for the USC "Salkehatchie Stew" oral history and theater project.

Tech Charter School. Competency development, social-emotional learning, and the gap in workforce readiness are part of today's educational framework. "Reach, Rise, Soar" is this innovative charter school's motto to encourage youth to become acquainted with many areas of study that are of interest and needed by our community. The panel includes Kim Statler, Sandra Chavez, and General Lloyd "Fig" Newton.



**SANDRA CHAVEZ** is a founding member of Polaris Tech Charter and currently serves on the Board. Her 30+ year career in business, non-profit management, and education included AT&T, consulting, and Beaufort County School District. She earned her bachelor's degree from Capella University, a master's degree in Public Administration from Clemson University, and is currently a Ph.D. student in Policy Studies at Clemson University.



**GEN. LLOYD "FIG" NEWTON** is a founding member of Polaris Tech Charter School and currently serves as the Board Chair. He is a retired four-star General with the U.S. Air Force and retired Executive Vice President, at Pratt & Whitney Military Jet Engines. He earned a bachelor's degree from Tennessee State University and a master's degree from George Washington University.



**KIM STATLER** is the Executive Director and a founder of Polaris Tech Charter School. Her 20+ year career in policy and economic development included SC Department of Commerce as a Workforce Specialist. She earned her bachelor's degree from Southeast Missouri State and a master's degree from Des Moines University.

### COI205: WHAT'S HAPPENING IN THE OFFICE OF CULTURAL AFFAIRS ON HILTON HEAD ISLAND

1 Session | Tuesday | Jan 30 | 10:30AM-12N  
In-Person only | Hilton Head campus



The Director of the Town of Hilton Head Island-Office of Cultural Affairs will share information about the Town's public art projects, the annual Crescendo Celebration of Art and Culture, the Lantern Parade, and other community-oriented arts and cultural activities. Find out what projects are coming for next year and how you can get involved.



**NATALIE HARVEY** joined the Town of Hilton Head Island in the year 2022 as Director of Cultural Affairs. Prior to that, she implemented exhibits, programs, community outreach, and the Art Market at the Coastal Discovery Museum.

### COI206: SHIFTING THE EDUCATION PARADIGM

1 Session | Wednesday | Jan 31 | 10-11:30AM  
In-Person, Zoom | Bluffton campus



This presentation will focus on the challenges and opportunities existing in the South Carolina education system and the innovative journey of the local Polaris

### COI207: AARP SMART DRIVER TEK (SDTEK)

1 Session | Friday | Feb 02 | 10AM-12N  
In-Person only | Bluffton campus



Today's new cars come with all kinds of safety features. Although they help us to be safe, they can be confusing. Designed as an adjunct to the AARP Smart Driver class, SDTEK gives drivers even more ways to drive safely. Presented as a service of AARP; trained volunteers teach SDTEK.

**NOTE:** There is no OLLI class fee and no charge from AARP. Membership in AARP is NOT required to take this class. This is NOT the AARP Smart Driver class which may give you a discount on your auto insurance.



**JEFF GLAZER** is a volunteer for AARP. He loves to teach. Jeff was an adjunct professor of graphic design in New Jersey, and he has taught classes locally at the Sun City Computer Club and OLLI. While his primary area of expertise is in computers, he has taught OLLI classes in many other areas such as introversion, ADD, the music of Tom Lehrer, and Nikola Tesla.

### COI208: AN EXPOSE ON THE HORRORS OF DRUG ADDICTION

1 Session | Wednesday | Feb 07 | 5-7PM

In-Person only | Bluffton campus



Drug addiction is killing over 100,000 Americans annually. It is destroying individuals, ruining families, costing unaccounted millions of dollars, and may be the greatest scourge currently facing our youth. This program will give you an up close and personal insight into the horrors of addiction and its impact on the addict's family and friends. Participants will leave this class with a much deeper understanding of addiction, and with a logical, yet compassionate, call to action to address this scourge and to support those who are struggling to overcome their own addictions.



**ROBERT J. DURST (Bob)** is a retired attorney who practiced for 45+ years in New Jersey and Pennsylvania. Following his retirement, Bob served as a volunteer Chaplain in a county jail where his work was primarily with young, female heroin addicts. From many hundreds of face-to-face, impactful conversations with addicts and their families, Bob has developed insights for the addicted, which he has shared in his book "Funny, I Don't Remember Any Good Dope Days."

### COI209: PETROLEUM INDUSTRY WHAT'S BEHIND THE PUMP

1 Session | Monday | Feb 12 | 10-11:30AM

In-Person only | Bluffton campus

### COI210: PETROLEUM INDUSTRY WHAT'S BEHIND THE PUMP

1 Session | Monday | Feb 12 | 10-11:30AM

In-Person only | Hilton Head campus (live streamed from Bluffton)

LIVE  
Stream

The petroleum industry is an essential part of our lives. It fuels such diverse activities as transportation, military needs, manufacturing, and improvements in the quality of our lives. Plastics are a by-product of crude oil, shelter,

heating, and cooling our homes. The search for crude oil as a strategic national interest has also initiated conflict and the recycling of by-products is proving to be challenging. This class explores the petroleum industry and what we can learn about this essential element of modern living.



**CARLTON DALLAS** is a 34-year petroleum industry veteran who has managed assets in 71 countries on five continents. During his last assignment as Regional Director for the Africa/Europe/Middle East/Pakistan Region, he earned Chevron's highest honor, the Chairman's Award for performance.

### COI211: MORE THAN YOU IMAGINE - USCB FACULTY & STUDENTS DOING AMAZING THINGS

1 Session | Wednesday | Feb 21 | 1-2:30PM

In-Person only | Bluffton campus



Maritime research, global international programs, local reconstruction studies, students out in the community applying their skills and research - USCB is all grown up and doing work much larger universities envy. This program will give you a front-row seat meeting some of the faculty doing amazing programs and research, along with the students doing experiential learning. USCB- More Than You Imagine!

**NOTE:** This class is free to OLLI members.



**DR. ERIC SKIPPER** serves as Provost and Executive Vice Chancellor for Academic Affairs at USCB. Strategic areas of focus include experiential learning, honors education, internationalization, and strategic planning. He received his Ph.D. in Spanish literature from Florida State University. Eric will be joined by DR. KIM RITCHIE and RICK SIEBENALER, Maritime Research & Cybersecurity, DR. VALINDA LITTLEFIELD, USC Local Reconstruction Studies, DR. BABET VILLENA-ALVAREZ, Interim Assistant Vice Chancellor for Academic Affairs and several USCB Student Presenters

**COI212: ACTIVE SHOOTER PREPAREDNESS**

1 Session | Friday | Apr 05 | 10-11:30AM  
In-Person only | Bluffton campus

Due to the number of active shooter incidents and the swiftness with which they unfold, being aware and prepared can only help ourselves, our families and the community should a situation arise. This course will provide details on what we've learned about the history of active shooter incidents, offenders, and behaviors to look for. This program will focus on how to be prepared and gain the skills needed to recognize, prepare, and increase your ability to survive during an active shooter incident.



**SERGEANT BRUCE OLIVER** has 40+ years of law enforcement experience and has worked for the USCB, Department of Public Safety for the past 12 years. Sgt. Oliver is a retired police detective from the Bethlehem Police Department in New York State. Bruce worked directly in elementary, middle, high school, and college settings for much of his career. Sgt. Oliver is a former FBI officer, and former Deputy U.S. Marshal.

**COI213: THE KOREAN WAVE 2024 - CHANGING DEMOGRAPHICS OF THE LOWCOUNTRY**

2 Sessions | Wednesday, Friday | Apr 10, Apr 12 | 10AM-12N   
In-Person, Zoom | Bluffton campus

Our Lowcountry region is changing dramatically with the arrival of a South Korean conglomerate (Hyundai) building a \$5.54 billion plant 37 miles from USCB Bluffton. The Korean Wave of culture is in our sights via the PGA Congaree Golf tournament in 2022; the Talmadge bridge plan to be raised for bigger ships; many of our homes using Samsung and LG; Kia; SK Battery; and K-Pop products. This program is an updated and more in-depth program than the class presented in OLLI Fall 2023. Learn the latest information on this unique culture we've not known much about with the goal of increased understanding and supportive relations between the United States and our newest friends and neighbors.



**JUANITA BABET VILLENA-ALVEREZ** arrived at USCB in 1994 to teach French, Spanish, and Global Studies. Her accolades include Sorbonne graduate, initiated USCB's 1995 study abroad, 1998 USCB Professor of the Year, 2010 South Carolina Governor's Professor of the Year, 2012 South Carolina Board of Trustees Professorship, 2018 Fulbright-Hays Group Seminar in Poland, and 2019 Fulbright keynote.

**COMPUTERS****COM200: MAJOR TRENDS OF STREAMING**

1 Session | Thursday | Mar 07 | 1:30-3:30PM  
In-Person only | Hilton Head campus 

Since starting to review the trend in streaming in 2018, this option for entertainment has been consistently growing in popularity. The COVID years made it a very popular option. Now it has become the standard and replaced both cable and satellite options. This class reviews the basics of streaming and major trends to help participants make cost-effective decisions on how to take advantage of this way to access entertainment, from the internet.



**BOB GENTZLER**, a retired Ph.D. chemist, who is a 20-plus year Hilton Head resident and volunteer. His recent activities include volunteering for over ten years at Hilton Head Island Computer Club where he has presented both streaming presentations and Apple® support.

**CULINARY ARTS****CUL200: TIME TO ROOT FOR ROOT VEGETABLES**

1 Session | Tuesday | Feb 20 | 10AM-12N  
In-Person only | Hilton Head campus 

**Supply Fee \$18**

**Limited Enrollment – 24 (Random Draw Registration)**

In this demonstration, Chef Gill will share delicious recipes that will make you want to put beets, carrots, celeriac, parsnips, rutabagas, and turnips on your food team! She will provide step-by-step instructions for roasted, braised, and raw applications. Enjoy a generous tasting of autumn tabbouleh, celery root, and wild rice chowder, along with ancho spiced honey-glazed vegetable medley. All dishes are vegetarian.



**MARY KAY GILL** began her professional career as an accountant then put her culinary interest on the front burner in 2008. She has been teaching home chef enthusiasts of all levels to prepare recipes geared to a healthy lifestyle that is delicious and nutritious. She is now the owner/operator of a "Chefs for Seniors" franchise, serving the Hilton Head and Bluffton communities as a private chef, to improve lives through food.

### CUL201: AN ITALIAN STAPLE - SHRIMP FRA DIAVOLO

1 Session | Tuesday | Feb 27 | 1-3PM

In-Person only | Hilton Head campus

**Supply Fee \$18**

**Limited Enrollment – 24 (Random Draw Registration)**

Italian food is one of the world's favorite cuisines. Pasta and seafood are both staples of Italian cuisine. If you happen to be in Italy, south of Rome, you may find yourself enjoying some seafood (especially shellfish) over pasta with tomato sauce. From this cooking demonstration, you will learn how to make a popular Italian seafood/pasta favorite, Shrimp Fra Diavolo, in your own cucina. You may also pick up a tip or two on how to make your version of Shrimp Fra Diavolo extra special.



**RICH BUFFA** has a life-long love for good food and enjoys cooking. His mother was a very talented Italian cook whose cooking skills rubbed off on him. Rich has also attended cooking classes, including several multi-session courses.

### CUL203: SPRING HORS D'OEUVRES TO WOW YOUR FRIENDS AND FAMILY

1 Session | Tuesday | Mar 12 | 11AM-1PM

In-Person only | Hilton Head campus

**Supply Fee \$18**

**Limited Enrollment – 24 (Random Draw Registration)**



Get ready for Easter and spring with four seasonal hors d'oeuvres fit for any occasion. In this hands-on class, Chef Kim will guide you through the preparation and presentation of four hors d'oeuvres sure to please your guests. Tips will include help with knife skills, presentation, and planning/prepping ahead of time. The features will be crab, salmon, and beef.



**KIM BARETTA** is a classically trained chef with experience catering and teaching cooking classes. She serves on the Board of Memory Matters. Her role includes educating the community on the importance of the Mediterranean diet as it relates to brain health.

### CUL204: MORNING JOE - WHAT'S YOUR FAVORITE COFFEE? CAPPUCCINO, EXPRESSO, OR LATTE

1 Session | Monday | Mar 18 | 10AM-12N

In-Person only | Bluffton campus

**Limited Enrollment – 20 (Random Draw Registration)**



What is your favorite coffee brew - Cappuccino? Espresso? Latte? This course will discuss a brief history of coffee, why it is so popular, and how coffee has impacted world history. Then comes the practical! Taste different types of coffee made with various machines. Learn how to use the various coffee machines and see which cup of joe suits you best.



**BRUCE MARX** assisted the Northwestern University OLLI program coordinating and presenting courses including "From Nuremberg to the Hague". He enjoys coffee and has done extensive research on the art and history of different coffee drinks and brewing methods.

### CUL205: PIZZA PANDEMONIUM

1 Session | Monday | Mar 18 | 11AM-1PM

In-Person only | Hilton Head campus

**Supply Fee \$18**

**Limited Enrollment – 20 (Random Draw Registration)**



Join us for an Iron Chef-like approach to pizza making. Dr. Sean Barth will present the ingredients, and it's up to you to create a pizza or two. Work with USCB Hospitality students to create and cook your pizza(s) of choice in the beautiful HHI Kitchen Lab. Come show off your hands-on pizza skills with us. It'll be entertaining!



**SEAN BARTH, Ph.D.**, is a USCB Assistant Professor in the Hospitality Management program who has 18 years of experience in hotels, restaurants, private clubs, hospitals, and much more. He is certified as a TIPS instructor in an alcohol awareness program.

## CUL206: LECTURE, TOUR & LUNCH AT THE CULINARY INSTITUTE OF THE SOUTH

1 Session | Thursday | Apr 11 | 10AM-1PM

In-Person only | Offsite (Bluffton)

**Tour Fee \$ 45**

**Limited Enrollment – 36 (Random Draw Registration)**

The Technical College of the Lowcountry's (TCL) Culinary Institute of the South's 30,000-square-foot Bluffton campus opened its doors in 2021. Participants will attend a presentation in the Montage Palmetto Bluff Auditorium to learn about the college's programs, degrees offered, and the economic impact TCL brings to the community and beyond. Following the presentation, enjoy a cooking demonstration with plenty of samples and a tour of the facility featuring the Foodseum, teaching kitchens, and the Gillis, Sampson/Chiacchiero Ballroom. A delicious lunch prepared by the TCL instructors and students will be served in The Bistro, the college's 36-seat restaurant, as the last activity for the program.



**DR. FRANCINE MARZ** is the Dean of Culinary and Hospitality at the Culinary Institute of the South at the Technical College of the Lowcountry. Dr. Marz earned her doctorate in Organizational Leadership, Innovation, and Learning from Wilmington University in New Castle, Delaware. Over the course of her 30 years of industry experience, Marz has worked in a number of notable restaurants, hotels, and resort culinary schools across the country often serving in leadership roles or as executive chef.

## ECOLOGY

### ECO200: SAVANNAH NATIONAL WILDLIFE REFUGE

1 Session | Monday | Feb 12 | 8:30-11:30AM

In-Person only | Offsite (Savannah)

**Tour Fee \$38**

**Limited Enrollment – 27 (Random Draw Registration)**

Join OLLI on a small touring van to Savannah National Wildlife Refuge. This is a spectacular driving tour and provides opportunities for viewing migrating waterfowl, bird life, as well as alligators and other wildlife. There will be several stops where members can deboard to view the surroundings. Some walking to view wildlife is possible. This driving loop takes 1.5-2 hours depending on the number of stops and wildlife sightings. Participants will stop at the visitor's center following the tour to view exhibits and other educational information.

**NOTE:** There are no restroom facilities along the loop (except possibly a port-a-potty).

**JILL MOORE**, Master Naturalist, has a background in education and is the owner and creator of Moore to Life. Her



love of the outdoors started young while spending the summers of her youth in Montana where her parents are from. In search of a place full of outdoor adventure to raise her three boys, Jill's family ended up in the Lowcountry of South

Carolina. Sharing what she has learned and experienced in this area "like no other place on earth" is what she hopes to share with others through these educational opportunities.

### ECO201: ALL ABOUT ALLIGATORS AT THE COASTAL DISCOVERY MUSEUM

1 Session | Tuesday | Feb 20 | 10-11:30AM

In-Person only | Offsite (Hilton Head)

**Tour Fee \$10**

**Limited Enrollment – 35 (Random Draw Registration)**



We've all heard a thing or two about alligators such as "Run in a zigzag if an alligator is chasing you!" or "Alligators can't climb!" Leave behind the myths and discover the fascinating truths about these ancient predators we share the Lowcountry with. Join Amanda Ballantyne, environmental educator at the Coastal Discovery Museum, as she reintroduces you to the lives of alligators. Learn about their relation to other crocodylians, their interactions with their environment and each other, and gain insights into how we can coexist with them.



**AMANDA BALLANTYNE** began her career as a tour guide at the Bronx Zoo and later transitioned to become an animal educator at Siegfried and Roy's Secret Garden and Dolphin Habitat in Las Vegas. Her journey brought her back to the Bronx

Zoo, where she assumed the role of Wild Encounters Department's Supervisor, Educator, and Host. She got herself closer to coastal environments as a science educator at the Maritime Aquarium in Connecticut, but now she finds herself right at home to nurture her passion for coastal environments and wildlife working for the Coastal Discovery Museum.

**ECO202: WHAT IS HAPPENING TO OUR BEES?**

1 Session | Wednesday | Feb 21 | 10:30AM-12N  
In-Person only | Hilton Head campus



David Arnal will give a one-hour lecture on the intricacies of keeping bees and how humans have been able to manipulate this social insect to their benefit, including their importance to our agriculture and our food supply. The lecture will also focus on the Colony Collapse Disorder spreading throughout honeybee colonies in the U.S.A. and Europe, causing the annual loss of more than 1/3 of honeybee colonies with devastating consequences to agriculture, other pollinators, and our economy.

**NOTE:** Stop and buy a jar of honey after class!



**DAVID ARNAL** is an accredited Journeyman/Master Beekeeper with the South Carolina & Georgia Beekeepers Associations and is the former Director of the South Carolina Master Beekeeper Program. He has been published in the "American Bee Journal" and is a member of the Eastern Apiculture Society. David is a graduate of Clemson University and Harvard University.

**ECO203: EXPLORING THE SC AND GA LOWCOUNTRY - PLACES TO VISIT**

1 Session | Monday | Feb 26 | 1-2:30PM  
In-Person, Zoom | Bluffton campus



Whether you call the Lowcountry home or you're here for a visit, venturing out to explore the area is a must! From the well-known wildlife refuges to more "off-the-beaten" path destinations, there is an abundance of places to experience the area including Georgia which is just a short distance away. Join local Master Naturalist Jill Moore for a presentation on local Lowcountry excursions and what you may encounter depending on the season.



**JILL MOORE**, Master Naturalist, has a background in education and is the owner and creator of Moore to Life. For a full biography, see ECO200.

**ECO204: TOUR OF GRAY'S REEF OCEAN DISCOVERY CENTER**

1 Session | Wednesday | Feb 28 | 10AM-12N  
In-Person only | Offsite (Savannah)



**Limited Enrollment – 50 (First Served Registration)**

Gray's Reef Ocean Discovery Center serves as the visitor center for Gray's Reef National Marine Sanctuary, located off the Georgia Coast in the center of the South Atlantic Bight. Take a guided tour around the Discovery Center to learn about this incredible live-bottom reef ecosystem and the creatures that call it home, the research and monitoring efforts of scientists studying Gray's Reef, and what we can do to protect this unique environment in our backyard. Want to go diving without getting your feet wet? Use virtual reality goggles to explore Gray's Reef through a series of video clips featuring some of our favorite critters including a loggerhead turtle with no personal space, a hunting black sea bass, and a nurse shark looking for a place to rest under a reef ledge. Finally, participate in an activity to learn how to test water quality, interpret results, and study how humans can directly affect the ecosystems around us.

**NOTE:** OLLI members are responsible for driving to the museum, in Savannah. Several great restaurants are close to the museum and within walking distance for those looking for lunch after the tour.



**MARY QUINN** holds a B.A. in Biology and spent time in the Florida Keys, working for a marine science education non-profit as a field educator. She recently moved to Savannah to work as a contractor for the National Oceanic and Atmospheric Administration (NOAA) as the Education and Outreach Specialist for Gray's Reef National Marine Sanctuary.



**PARKING DECALS are required on all USCB campus locations. If your decal looks like this, you have the latest decal and do not require a replacement at this time.**

**ECO205: HARRIS NECK NATIONAL WILDLIFE TOUR**

1 Session | Wednesday | Mar 20 | 10AM-3PM

In-Person only | Offsite (Townsend, GA)

**Tour Fee \$ 53****Limited Enrollment – 35 (Random Draw Registration)**

Join OLLI on a small touring van to explore Harris Neck National Park in Georgia. The wide variety of habitats at Harris Neck Wildlife Refuge provides endless opportunities for wildlife viewing. An incredible variety of birdlife will be the highlight of this trip, along with so much more. Plan to spend the day as certified naturalist Jill Moore guides you on a nature walk followed by a driving tour of the four-mile loop in the afternoon.

**NOTE:** You must be comfortable leisurely walking on a boardwalk and uneven terrain. The trip includes transportation, viewing wildlife with naturalist Jill Moore, and park entry.



**JILL MOORE**, Master Naturalist, has a background in education and is the owner and creator of Moore to Life. For a full biography, see ECO200.

**ECO206: WILDLIFE TOUR CONGAREE NATIONAL PARK**

1 Session | Tuesday | Apr 02 | 8:30AM-5PM

In-Person only | Offsite (Columbia)

**Tour Fee \$53****Limited Enrollment – 35 (Random Draw Registration)**

Join OLLI on a small touring van to explore one of South Carolina's hidden gems and our only national park, Congaree, in Hopkins, South Carolina. Naturalist Jill Moore will guide the group on a breathtaking tour through the largest intact expanse of old-growth bottomland hardwood forest remaining in the southeast. Interpretive nature and history will be shared along the way. First, participants will tour the 2.5-mile boardwalk loop (in the van) and following lunch, have the opportunity to join Jill on the nature trails or spend time at the visitors center and exploring the boardwalk walking on your own.

**NOTE:** The trip includes transportation, a full day spent with a certified naturalist Jill Moore, and park entry. You must be comfortable leisurely walking 2-3 miles on a boardwalk and uneven terrain.



**JILL MOORE**, Master Naturalist, has a background in education and is the owner and creator of Moore to Life. For a full biography, see ECO200.

**ECO207: NATURE WALK - PINCKNEY ISLAND NATIONAL WILDLIFE REFUGE**

1 Session | Tuesday | Apr 09 | 10AM-12N

In-Person only | Offsite (Hilton Head)

**Tour Fee \$18****Limited Enrollment – 20 (Random Draw Registration)**

With over 4,000 acres, Pinckney National Wildlife Refuge is a wildlife refuge designed for conservation purposes. The diverse ecosystems from freshwater ponds, salt marsh flats, and maritime forests can be enjoyed in a short accessible walk. Plan to explore this amazing location with naturalist Jill Moore, as she guides you on a three-mile round-trip walking adventure sharing the nature and history of Pinckney Island along the way.

**NOTE:** Must be comfortable walking on uneven terrain over 1.5-2 miles. No bathroom facilities available.



**JILL MOORE**, Master Naturalist, has a background in education and is the owner and creator of Moore to Life. For a full biography, see ECO200.

**ECO208: BUTTERFLIES OF THE LOWCOUNTRY AT THE COASTAL DISCOVERY MUSEUM**

1 Session | Thursday | Apr 11 | 1-2:30PM

In-Person only | Offsite (Hilton Head)

**Tour Fee \$10****Limited Enrollment – 35 (Random Draw Registration)**

Learn about native butterflies found in the Lowcountry, their life cycle, and specific host plants. Take a closer look at all four stages of their life cycle (egg, larvae, chrysalis, and adult butterfly) and their unique survival adaptations. Take a guided walk through the Karen Wertheimer Butterfly Habitat and discover how simple it is to create your own butterfly garden and what you need to know to increase butterfly numbers in the wild.





**CARLOS CHACON** received a M.S. in Earth and Environmental Resources Management from the University of South Carolina. In 2005, Carlos joined the Coastal Discovery Museum as the Manager of Natural History. As the Naturalist at the Coastal Discovery Museum, Carlos conducts numerous nature programs on diverse topics and manages the Karen Wertheimer butterfly enclosure.

### ECO209: BIRDING BY EAR

1 Session | Friday | Apr 12 | 1-2:30PM  
In-Person only | Bluffton campus



Have you ever wondered if you could identify different birds by their song? In this course, we will explore the many different types of bird vocalizations and learn to recognize the many birds in our area by song. In addition, we will discuss why birds "sing" and examine the relationship between bird song and ecology.



**BOB ANDREUCCI** is a graduate of SUNY College of Environmental Science and Forestry, and Syracuse University with a degree in Forest Biology. He also earned a master's degree from Lehigh University and has 30 years of experience as an arborist and science teacher. In 2022, Bob relocated to the Lowcountry and joined Bartlett Tree Experts. Bob is an ISA Certified Arborist.

### ECO210: MAY RIVER EXPEDITION - MORNING

1 Session | Thursday | Apr 25 | 10-11:30AM  
In-Person only | Offsite (Bluffton)

### ECO211: MAY RIVER EXPEDITION - AFTERNOON

1 Session | Thursday | Apr 25 | 12N-1:30PM  
In-Person only | Offsite (Bluffton)

**Tour Fee \$35**

**Limited Enrollment – 20 (Random Draw Registration)**

Come aboard Captain Amber Kuehn's floating classroom, *Spartina*, to explore Bluffton's May River. On this biology expedition, you will explore the interesting and unique life of the Lowcountry's salt marsh estuary. Amber, a marine biologist, will provide scientific explanations as you take a trip through this scenic river and salt marsh. Dolphins, wading birds, and fiddler crabs are among other visitors commonly seen on the tour.



**AMBER KUEHN** is a local marine biologist who grew up in Bluffton. Her master's degree and her captain's license bring this salt marsh ecology tour to life.

### ECO212: PROTECT ST. HELENA AND RURAL FARMING

1 Session | Tuesday | Apr 30 | 10-11:30AM  
In-Person only | Offsite (Beaufort)



Every hour, 85 acres of working farms are lost to development or other uses. Beaufort and Jasper counties are home to 296 farms that we depend on for supplying our fresh produce, animal products, and other goods like sod.

The Open Land Trust and Gullah Farmers Cooperative Association have partnered on a four-year project with the American Farmland Trust aimed at dramatically increasing the transfer of farmlands to the next generation of producers to ensure we have healthy working farms far into our future. Together, the two organizations will provide resources that may help navigate the transition and succession of land from one generation to the next while also creating new opportunities that wouldn't otherwise exist for new growers and land stewards. The end goal is a sustainable future in agricultural production and preservation and eliminating barriers to access and information is the first step. Enjoy a presentation from the two organizations and hear more about our rural heritage and the steps we can all take to conserve it. <https://www.gullahfarmers.org> and <https://openlandtrust.org/>



**KRISTIN WILLIAMS** assumed the role of Executive Director of the Open Land Trust in January 2018. Kristin brings with her 10 years of experience as the Executive Director of a conservation organization, Friends of the Environment, located in Abaco, Bahamas. Kristin has a track record of success in program development, partnership expansion, and campaign management. A native of the Bahamas, Kristin attended the College of Charleston.

The Gullah Farmers Cooperative was founded in 2010 to establish a profitable, significant local food market for Farmer members who are honoring and continuing the agricultural traditions of the Gullah Community. Today, the Cooperative represents ten Gullah farm operations in the coastal counties of South Carolina: Beaufort, Colleton, Hampton, Charleston, and Jasper.

### ECO213: GOIN' SHRIMPIN' ABOARD THE LADY JANE

1 Session | Thursday | May 02 | 2-8:30PM

In-Person only | Offsite (New Brunswick)

**Tour Fee \$128**

**Limited Enrollment – 30 (Random Draw Registration)**

This excursion on board the *Lady Jane* is a private charter with Captain Cameron that includes learning about local sea life, shrimping, and the pristine waters and vast salt marshes of the Golden Isles. The shrimp nets will be cast three times while guests enjoy learning about shrimping and conservation. An authentic Lowcountry Boil meal (corn, onion, potato, sausage, and shrimp) along with appetizers and dessert will be served on board.

**NOTE:** This cruise is in protected waters through the picturesque marshes of Glynn County and its tributaries. The *Lady Jane* provides an enclosed cabin, restroom, large covered deck with ample seating, and room to walk from bow to stern while enjoying the views. Transportation is provided to Brunswick, Georgia on a coach bus.



**CAPTAIN CAMERON AKO** will be leading our shrimping excursion. The *Lady Jane* is a U.S. Coast Guard-certified passenger vessel. Once a commercial steel hull shrimping trawler, she was retired after years of loyal service to the shrimping industry. "*Lady Jane*" has been painstakingly refurbished for the purpose of eco-tourism, education, and conservation.

### ECO214: OAK ISLAND ECO TOUR

1 Session | Thursday | May 09 | 10AM-12N

In-Person only | Offsite (Beaufort)

**Limited Enrollment – 25 (Random Draw Registration)**

This walking tour includes the recently designated Old Growth Forest on Oak Island, which is accessed by a bridge from Dataw Island. Oak Island was donated to the Dataw Conservancy and will remain a natural resource without development. Tour the island via an approximate one-mile hike and learn more about the plants and ecosystem on Oak Island.

**NOTE:** There will be an optional lunch gathering at Morgan River Gill following the program.

*The Dataw Conservancy was created to permanently protect and preserve our natural heritage and promote appreciation*

*for the unique environment and character of the Island. It is organized and operated exclusively for charitable and educational purposes and will take on the responsibility of guiding the community to safeguard our precious legacy of clean water, native vegetation, abundant wildlife, and scenic views enjoyed by all.*

## EVENTS

KENTUCKY DERBY  
150  
SATURDAY, MAY 4, 2024  
USCB BLUFFTON CAMPUS  
5-7 P.M.  
"AND THEY'RE OFF"  
Livestream of the 2024 Kentucky Derby  
Grab your derby attire and Eat, drink,  
and merrily place your "bets"  
REGISTRATION IS REQUIRED

### EVENT1: OLLI DAY ON THE COURTS

1 Session | Saturday | Jan 13 | 1:30-5:30PM | Bluffton Campus

Enjoy a day with OLLI watching the USCB women's and men's basketball teams play against Georgia Southwestern here on the Bluffton campus.

**NOTE:** Ticket registration is on a first served basis.

### EVENT2: TRIVIA SOCIAL EVENT

1 Session | Wednesday | Mar 27 | 3-4:30PM | Bluffton campus

Join fellow OLLI members for an afternoon of trivia competition and fun. The professionally run trivia contest is a great way to gather your fellow OLLI friends, guests, and neighbors and test your knowledge regarding all sorts of topics. The USCB dining hall will have food options available for purchase to satisfy your trivia hunger.

**NOTE:** Free to OLLI members and their guests.

**EVENT3: OLLI SPRING GAME DAY EVENT**

1 Session | Tuesday | April, 23 | 3-4:30PM | Bluffton Campus

Join fellow OLLI members for an afternoon of competition and fun. Our game event is a great way to gather your fellow OLLI friends, guests, and neighbors. Game to be determined. The USCB dining hall will have food options available for purchase to satisfy your trivia hunger.

**NOTE:** Free to OLLI members and their guests.

**EVENT4: KENTUCKY DERBY SOCIAL/PARTY**

1 Session | Saturday | May 04 | 5-7PM | Bluffton campus

Grab your derby attire and come prepared to eat, drink, and merrily place your "bets" at our Second Annual *And they're Off* live stream of the 2024 Kentucky Derby.

**FILM****FILM200: HISTORY AND LEGACY OF FILM NOIR**

3 Sessions | Thursday | Jan 11, Jan 18, Jan 25 | 3-5PM

In-Person only | Bluffton campus



Film Noir is a film genre that depicted the dark side of movies and crime films during the period of 1940 through the late 1950s. This program will be a series of three presentations covering the history of the genre from its German origins and the impact of World War II, actors, directors, writers, music, and examples of the genre. We will also delve into neo-noir films.

**NOTE:** This is a three-session program. The first two sessions will be in lecture and discussion format. A film will be shown during the third session which will end at 5:30 p.m.



**JEFFREY P. McQUILLEN** is an instructor of English and Film Studies. He is also the Program Coordinator of the Interdisciplinary Film Minor and IDST advisor at USCB.

*Joan Ruffino has hand-picked three of her favorite foreign feature films. Join us for a brief introduction to the film, film viewing, and follow-up discussion.*

**FILM201: FOREIGN FILM: THE KITE RUNNER**

1 Session | Friday | Feb 02 | 1-4PM

In-Person only | Bluffton campus



"The Kite Runner" (2007) is a story about Amir, a child in Afghanistan, who makes a regrettable choice as a boy and tries to make reparations as an adult.

**FILM202: FOREIGN FILM: BURNT BY THE SUN**

1 Session | Friday | Mar 01 | 1-4PM

In-Person only | Bluffton campus



"Burnt by the Sun" (1994) depicts the story of a senior Red Army officer and his family during the Great Purge of the late 1930s in the Stalinist Soviet Union. This film won the 1994 Academy Award as Best Foreign Language Film.

**FILM203: FOREIGN FILM: HONEYLAND**

1 Session | Friday | Apr 05 | 1-4PM

In-Person only | Bluffton campus

"Honeyland" (2019) is a stunning documentary that focuses on Hatidze, a lonely bee farmer of Turkish descent in the remote hills of Macedonia.



**JOAN RUFFINO** has been an OLLI instructor for 17 years presenting her interests in history, biography, literature, and film. Joan taught courses for Road Scholar and L.I.F.E. at St. Mary's College. This is her 8th year presenting a series of thought-provoking foreign films.

## GARDENING

**GAR200: LOWCOUNTRY GARDENING 101**

1 Session | Friday | Feb 02 | 1-2:30PM

In-Person, Zoom | Beaufort campus



This is a brand-new course from one of OLLI's respected master gardeners. This program is geared toward newcomers to our unique coastal area; however, even the most experienced gardeners learn new information along the way. This class is an overview of all the unique conditions gardeners are faced with in the Lowcountry - climate, weather, soil, drainage, and plant growth.



**WENDY WILSON HILTY** earned a B.A. in history at Wells College and a Master of Letters in History at the University of Aberdeen, UK. She was a senior lecturer in history at Northeastern University and is the author of 11 history textbooks for high school and college students.

**GAR201: CAMELLIAS - HISTORY, CARE AND PROPAGATION**

2 Sessions | Tuesday | Feb 20, Feb 27 | 1-2:30PM

In-Person only | Beaufort campus



This course introduces students to the fascinating history of camellias and their popularity here in the South as the premier winter-blooming flower. Propagation techniques of grafting and air layering will be demonstrated. These are both easy ways to get hard-to-find camellias and add them to your collection. Students will also be able to wax their own camellias to take home. This is a process using wax and mineral oil to preserve camellias for up to two weeks. Learn how to add color and tradition to a year with camellias - the Queen of Winter Flowers.

**BRENDA LITCHFIELD, Ph.D.** is a retired professor of Instructional Design and Development from the University of South Alabama. She taught high school biology and environmental science. Brenda has been growing camellias for 30 years and is a board member of the American Camellia Society. She grew up in Beaufort and recently moved back. Camellias are her hobby, and she has extensive experience in propagating and growing them.

**GAR202 : LOWCOUNTRY HERB GARDENING & DESIGN**

2 Sessions | Friday | Mar 08, Mar 12 | 1-2:30PM

In-Person only | Beaufort campus



Herb gardens hold a special place in the hearts of gardeners and cooks. Herbs can be grown anywhere in the garden. What herbs and cultivars are best for your needs and garden? Where, when, and how should you plant? When can you harvest and how do you preserve your herbs? Victoria has been studying and growing herbs for 40+ years in New York, California, England, Texas, Ohio, and right here in the Lowcountry. This two-session course will provide ample information on herb-growing knowledge and garden design.



**VICTORIA BERGESEN** belongs to the Beaufort Garden Club, Low Country Master Gardeners, and the South Carolina Native Plant Society. She is a National Garden Club master environmental consultant, master flower show judge, master gardening consultant, and master landscape design consultant. Victoria holds a South Carolina Botanical Gardens Native Plant Studies certification and has completed climate reality leadership training.

**GAR203: SOME LIKE IT HOT - PLANTS THAT CAN TAKE THE HEAT**

1 Session | Thursday | Apr 04 | 1:30-3:30PM

In-Person only | Hilton Head campus



There are a lot of plants you probably have never heard of if you are a "transplanted" gardener and are accustomed to gardening in a milder climate. The long, hot South Carolina summer will soon be upon us. Even though it may be too hot outside for some gardeners, it's not too hot for some plants. Some perform best in the heat of the summer. Join Jacqueline Emery as she introduces some of the best perennials for the hottest time of the year.



**JACQUELINE EMERY** is a passionate gardener who has been gardening her entire life. Before coming to South Carolina, she gardened in diverse locations like Holland, Germany, Boston, and Cape Cod. After Hurricane Matthew devastated the area around her home, she designed a garden literally from scratch. She can be found working in her garden on most sunny days.

## GOVERNMENT AND POLITICS

**GOV200: ELECTORAL COLLEGE ABOLISH OR REFORM**

1 Session | Monday | Feb 19 | 1-2:30PM  
In-Person only | Bluffton campus

**GOV201: ELECTORAL COLLEGE ABOLISH OR REFORM**

1 Session | Monday | Feb 19 | 1-2:30PM  
In-Person only | Beaufort campus

**GOV202: ELECTORAL COLLEGE ABOLISH OR REFORM**

1 Session | Monday | Feb 19 | 1-2:30PM  
In-Person only | Hilton Head campus



This program, presented on Presidents' Day, provides an analysis of Electoral College history and its impact on presidential elections. Olin Sansbury weighs in on factors making this unique American institution undemocratic and offers suggestions as to how it might be beneficially reformed. A 45-minute presentation will be followed by a moderated group discussion. Olin Sansbury is brought to USCB OLLI through a grant by the South Carolina Humanities Speakers Bureau.



**OLIN SANSBURY** is Chancellor Emeritus of USC Spartanburg, now Upstate. He is a native South Carolinian growing up in Darlington and earning a B.A. in history at Wofford College and a Ph.D. in international studies at USC Columbia. After

serving 37 months in the U.S. Army, Sansbury became a journalist and then a newsman and editorial writer for WBTW television in Florence. He began his academic career teaching government and international studies at USC Florence and Coastal Carolina. After retiring, he became executive director of the Greenville Symphony for five years and was a visiting professor at Wofford College, teaching courses on the American presidency.

## HISTORY – WORLD

**HIS200: MY FIVE YEARS UNDER ADOLF HITLER**

1 Session | Monday | Jan 22 | 1-2PM  
In-Person, Zoom | Hilton Head campus



Hendrik Smit was born in Amsterdam, the Netherlands in 1927. When he was 13 years old, the country was occupied by the Germans and he spent five years under the occupation. During that time, he joined the resistance. When the war was finished, he entered Technical College, Dordrecht, and obtained a degree in mechanical engineering. In 1952, he received a Fulbright scholarship to study at the Wharton School (University of Pennsylvania) and received his M.B.A. in 1954. He started working for American companies in Europe. After his industrial career, he served as a Commercial Counselor at the U.S. Embassy in Brussels. He retired in 1999 and settled on Hilton Head Island.



**HENDRIK SMIT** spent 5 years under the Hitler occupation. He is 95+ years old and has led an incredible life as an academic Fulbright scholar, engineer, government official, and family man. He is a U.S. citizen, married with three children, living on HHI. His two sons live in Canada and his daughter lives in Paris.

**HIS201: D-DAY GERMAN PERSPECTIVE AND MORE**

1 Session | Thursday | Feb 08 | 1-2:30PM  
In-Person, Zoom | Beaufort campus



By mid to late 1943, Germany was on the defensive strategically. This discussion will begin with the overall strategic situation and then move to the operational circumstances specifically on the "Atlantic Wall." Finally, and in detail, the German tactical situation on Omaha Beach (American sector) will be presented with on-site displays.



**AL PELLA, JR.** has volunteered at the National Museum of the Mighty Eighth Air Force honoring his father's legacy for many years. He has traveled extensively to visit the locations of his father's service and to learn as much as possible about the Eighth Air Force in WWII.

## HIS202: BAND OF BROTHERS - NORMANDY INVASION



5 Sessions | Friday | Feb 23, Mar 01, Mar 08, Mar 15, Mar 22  
10AM-1PM | In-Person only | Bluffton campus

June 6, 1944, was one of the most monumental days of the 20th century. After five years of war and four years of German occupation of France, the Allies finally took the war to the European continent. D-Day was perhaps the most significant military undertaking ever - the largest amphibious and airborne operation launched, heretofore. In this 5-session, 15-hour course, students will focus on the American portion of this day. This program will take an in-depth look at the U.S. operations, beginning with the airborne landings by the 82nd and 101st Airborne Divisions. Additionally, Utah and Omaha beaches and the daring assault by the Army Rangers, who scaled the cliffs of Pointe du Hoc, are examined in detail. From the highest-ranking generals to the youngest draftee private, let us meet the soldiers, sailors, and airmen who were the heroes of the day.

**NOTE:** In collaboration with other OLLIs and EF-Education First Tours, a battlefield tour to Normandy, France will be conducted in September 2024 and is open to those who attended the course. Trip details will be available through USCB OLLI in January 2024.



**COL (Ret) LAWRENCE SAUL** served more than 37 years in the U.S. Army, with more than 20 of those years overseas. He was one of the last Vietnam veterans still on active duty when he retired in 2008. He has taught more than 100 military history courses for four different OLLI programs. He is an experienced battlefield tour leader, focusing on the two World Wars in Europe.

### COFFEE AVAILABLE on all three campus locations

Thank you to the OLLI members who continually show their gratitude by donating coffee supplies.



## HIS203: RACING ACROSS THE ATLANTIC: THE ULTIMATE INTERNATIONAL COMPETITION

1 Session | Wednesday | Mar 27 | 10:30AM-12:30PM  
In-Person only | Hilton Head campus



Can you imagine an age without airplanes? In the late 1800s and early 1900s, people traveled internationally by ocean liners! Ships competed to break the record for the fastest ocean crossing. The ultimate prize, The Blue Riband, was awarded to the ocean liner crossing the Atlantic at the fastest speed. The Germans, British, French, Italians, and Americans all spent decades building more advanced ships, capable of faster and faster crossings. No country wanted to be left behind! Come and learn more about these luxury liners and the prestigious international competition, bar none.



**STEVE EMERY** has been an OLLI instructor for six years while engaging OLLI members with his informative and stimulating presentations on a variety of subjects. He has a keen interest in history and technology. Steve's lectures on the Women Airforce Service Pilots (WASP), Suffrage, the Isabella Stewart Garner Museum Heist, Who Killed King Tut, and the Dutch Delta Works were OLLI member favorites.

## HISTORY – U.S.

**HIS205: WHAT CIVIL WAR ARE WE TALKING ABOUT? SOUTHERN HONOR AND THE MYTH OF THE LOST CAUSE**

1 Session | Monday | Jan 29 | 10-11:30AM  
In-Person only | Bluffton campus



In the aftermath of a brutal Civil War, many Southerners justified their sacrifice by creating a romanticized version of the War. Prominent people like South Carolina's Wade Hampton and LaSalle Corbell Pickett, widow of the famed Confederate General, promoted a version of the War that justified the South's secession, casting doubt on the real causes of the conflict. This presentation explores this 19th-century manifestation of "fake news" and its lasting consequences on the national memory and understanding of the Civil War.



**RON ROTH**, a former Director and CEO of the Reading Public Museum in Reading, Pennsylvania, wrote the script for the permanent exhibition of the Central Pennsylvania African American Museum and its exhibit on the Underground Railroad. He curated and designed a permanent exhibition for the Historic Beaufort Foundation. Roth was a historian for the Gettysburg National Military Park and a Licensed Battlefield Guide at Gettysburg. His book, "The Civil War in the South Carolina Lowcountry" was described by the "Journal of Army History" as a "masterful" account of the Civil War in the South Carolina Lowcountry.

**HIS206: PUSHING THE ENVELOPE - HISTORY OF THE UNITED STATES POST OFFICE**

1 Session | Wednesday | Feb 07 | 10-11:30AM  
In-Person only | Beaufort campus



Learn about the history of the United States Post Office from the first letters carried on the Boston Post Road to its interesting evolution through time and generations. Learn about the expansion of the post office after the Revolution; the introduction of home delivery; the short-lived Pony Express; the carrying of mail by railroads, buses, and trolleys; the introduction of the rural free delivery; the start of parcel post; the use of V-mail during World War II; the start of zip codes; postal strikes; and today's current system challenges and financial strain.



**HENRY LUKAS**, retired, was the Education Director at the Spellman Museum of Stamp and Postal History at Regis College in Weston, Massachusetts. Henry spent 35 years in education as a principal and classroom teacher in various Massachusetts school systems.

**HIS207: ANTIETAM: AMERICA'S BLOODIEST DAY**

2 Sessions | Friday | Feb 09, Feb 16 | 10AM-12N  
In-Person only | Bluffton campus

The Civil War Battle of Antietam, fought near the town of Sharpsburg, MD on September 17, 1862, generated nearly 24,000 casualties in only 12 hours of combat. This course explores Robert E. Lee's rationale for invading the North; the days leading up to the battle; details of the epic struggle itself; and the aftermath in terms of the human, political, and military impact.



**JACK RABBITT** has been teaching at OLLI for over 14 years and has entertained hundreds of members with his enthusiastic, energetic, and informative presentations on a variety of business topics, the Civil War, European castles, and religion.

**HIS208: THE FRIENDSHIP THAT WON WWII**

1 Session | Monday | Feb 19 | 10AM-12N  
In-Person only | Bluffton campus



During the darkest days of the 20th century, a remarkable friendship came to the fore. Franklin D. Roosevelt and Winston S. Churchill bonded and led their two countries to victory in WWII. This is a brief history and timeline of the events that unfolded.



**MIKE MACDONALD** is a retired businessman from South Dakota now living in Minneapolis, MN, and Beaufort, SC. He has presented eight different classes for the South Dakota OLLI and four different classes at UCB OLLI. Mike is currently an OLLI member in SD, MN, and SC.

## HIS209: VIRTUAL TOUR OF THE HENRY FORD MUSEUM

1 Session | Wednesday | Feb 21 | 3-5PM | Zoom only



Henry Ford revolutionized the auto industry, but did you know the Henry Ford Museum complex houses much more? This virtual program will be the next best thing to travelling to Dearborn, Michigan to visit the complex. See the Ford Rouge Factory that at one time employed over 101,000 people and today completes the assembly of an F-150 pickup every minute. During the tour of Greenfield Village, see the actual bicycle shop of Orville and Wilbur Wright, the birthplace of Henry Ford, the home where Noah Webster wrote the first American English dictionary, a courthouse where Abraham Lincoln practiced law, and more. Finally, the virtual tour of the Henry Ford Museum will show planes, trains, and automobiles (far more than just Ford). Other notable items include a Dymaxion House designed by Buckminster Fuller, the Rosa Parks bus, and the Kennedy limousine, among thousands of other artifacts.



**JANICE WARJU** is a retired teacher, who spent 30 years educating high school students in the humanities and social sciences. In 2004, Janice began working at the Henry Ford Museum as a Model T Driver and Master Presenter during her summer breaks. She joined the Learning and Engagement Team in 2017.

## HIS210: BUFFALO SOLDIERS AND AMERICAN MILITARY HISTORY

1 Session | Tuesday | Mar 05 | 10AM-12N  
In-Person only | Bluffton campus



Buffalo Soldiers were African-American soldiers who mainly served on the Western frontier following the American Civil War. In 1866, six all-black cavalry and infantry regiments were created after Congress passed the Army Organization Act. The regiments were tasked with maintaining peace in the South during Reconstruction (1865-1877), building roads and telegraph lines, escorting U.S. Mail carriers, and protecting homesteaders as well as American Indians on their lands in the West. However, their contributions to our military continued at the Battle of San Juan Hill and the two World Wars. This program will give you insights into their storied history and legacy.



**ANDY DANNEKER** works at the Charles Young Buffalo Soldiers National Monument. The park tells the story of General Charles Young, his family, and the thousands of Black men who served in segregated Army units from 1866 through the Korean War.

## HIS211: HENRY V, HAMILTON! AND THE AMERICAN REVOLUTION IN SOUTH CAROLINA

1 Session | Tuesday | Mar 05 | 1-2:30PM  
In-Person, Zoom | Beaufort campus



Part 1: Shakespeare's "Henry V" resembles General Daniel Morgan at the Battle of Cowpens in South Carolina. Each leader visited with his men around their campfires, and each leader gave a battlefield oration.

Part 2: Lachlan McIntosh shared experiences with Alexander Hamilton and John Laurens, who are major characters in the musical "Hamilton!" McIntosh, Laurens, and Hamilton served together at Valley Forge and each of them participated in duels. McIntosh and Laurens served together at the Siege of Charleston in South Carolina, and each of them issued statements against slavery.



**DANIEL MCDONALD JOHNSON** is the Head Librarian at USC Salkehatchie. He is the author of numerous books, including: "This Cursed War: Lachlan McIntosh in the American Revolution;" "Savannah, Augusta, and Brier Creek: The Conquest of Georgia in the American Revolution;" and "The 71st Highlanders in the American Revolution."

## HIS212: WOMEN IN COLONIAL AMERICA AND THE AMERICAN REVOLUTIONARY WAR

1 Session | Wednesday | Mar 20 | 10AM-12N  
In-Person only | Bluffton campus



The role of women in Colonial America and in the American Revolutionary War is often overlooked, misunderstood, or forgotten. This program will help you to better understand the brave and resourceful women who not only defended their homelands and farms or businesses, but also played integral roles in the war effort by delivering secret messages to commanders and providing Continental troops with ammunition, supplies, and medical assistance. As we approach the 250th Anniversary of the Declaration of Independence, enhance your knowledge of the contributions of these extraordinary women.





**MIKE YOUNG** is retired from medical biotechnology. He is a 12th-generation American whose maternal ancestors came to America from England in the early 1600s. Mike is a member of the Sons of the American Revolution and descended from patriotic ancestors who fought in the War for Independence. Besides serving in the Army and as an Americorp Vista volunteer, Mike is an artist and accomplished author of "Women Who Would Be Free: Stories of Intrepid Women Who Struggled, Fought, and Won the American Revolutionary War."

### HIS213: CODEBREAKERS VITAL ROLE IN THE BATTLE FOR MIDWAY

1 Session | Monday | Apr 22 | 10AM-12N  
In-Person only | Bluffton campus

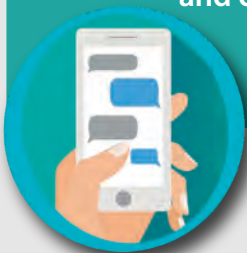


While American sailors and marines were battling the Imperial Japanese Navy in its attempt to capture Midway Island, June 4-6, 1942, another battle was being fought at Main Navy in Washington D.C. Radio intelligence and cryptanalysis provided by U.S. Navy codebreakers served as the linchpin for Admiral Chester Nimitz's strategy for ambushing the far superior Japanese fleet. The class will focus on who deserved the credit for uncovering the enemy's critical Midway attack plan - and victory.



**MARK CALLEN** has had a lifelong interest in warships and sea battles. He has held OLLI sessions on the Civil War at sea, the "Monitor," the "Merrimac," and the "Titanic."

**“** If you are not currently receiving class reminders via text message, please contact the OLLI office to opt-in to text message reminders and cancellations. **”**



## HISTORY – LOCAL

### HIS215: ORIGINS OF GULLAH GEECHEE CULTURE IN AMERICA

1 Session | Tuesday | Jan 23 | 10:30AM-12:30PM  
In-Person only | Hilton Head campus

Hilton Head's rich community of Gullah people have lived incredible lives based on strength and determination. Hear the stories about how Gullah life has been for generations since the Civil War.

### HIS216: THE INCREDIBLE CONNECTION BETWEEN RICE AND THE GULLAH CULTURE

1 Session | Tuesday | Feb 13 | 10:30AM-12:30PM  
In-Person only | Hilton Head campus

The Lowcountry story can't be told without telling how economically important Carolina Gold Rice was along the southern coastline and how intimately connected it is to Gullah Geechee culture. Journey from the West African origins of the culture, the incredible technology they replicated here, and how they made the Lowcountry one of the wealthiest areas in the South.

### HIS226: FIRST FAMILIES OF HILTON HEAD: STORIES OF THE GULLAH PEOPLE

1 Session | Tuesday | Mar 26 | 10:30AM-12:30PM  
In-Person only | Hilton Head campus

Luana Graves will relate local stories of strength, determination, and endurance about the Gullah families of Hilton Head. After several generations, have made significant contributions to the growth and development of the island. She will include the history of Hilton Head's Gullah community and the fascinating stories covered in the "First Families of Hilton Head" series of articles published by "Hilton Head Monthly" and "Local Life."



**LUANA M. GRAVES** is a cultural preservationist, documentarian, and writer who focuses on the Gullah culture, history, and people by documenting and publishing cultural legacies. She is the owner of SANKOFA Communications and founder of the nonprofits, Lowcountry Gullah and the Lowcountry Foundation, to preserve the Gullah culture and protect their land.

### HIS217: UNDERWATER SECRETS OF PORT ROYAL



1 Session | Wednesday | Feb 14 | 10:30AM-12N  
In-Person, Zoom | Hilton Head campus

Centuries of warfare and weather in the Port Royal Sound and area waterways have left tangible, underwater vestiges of a past filled with intrigue and mystery. The locations and causes of some of these remnants of a former age are revealed through research into documented sources and the use of modern technology in the pursuit of underwater archaeology.



**RICH THOMAS**, the owner of *Legacy Leadership and Legacy History Tours of the Lowcountry*, operating as *Hilton Head History Tours*, is a founding member of the *Hilton Head Island Institute*, a former board member of the *Heritage Library*, the *Santa Elena Foundation*, and the *Lowcountry Civil War Roundtable*. Rich is the founder and President of the Board of the *Friends of Honey Hill*, and a Co-Chair of the *South Carolina American Revolution Sestercentennial Commission's Committee of 99 for Beaufort District*.

### HIS218: BLUFFTON, A HISTORICAL STATE OF MIND



1 Session | Monday | Feb 26 | 10AM-12N  
In-Person only | Bluffton campus

"Bluffton, A Historical State of Mind" is a presentation made by a Bluffton native who grew up in Bluffton when it was a one-square-mile town with very little traffic and where everyone knew each other. Michael can trace his family history back 325 years in Beaufort County to a 1695 cattle brand stamp. The presentation will cover Bluffton's history starting with the Native Americans who lived here for centuries before the Europeans came. Next, it will include a recount of details of colonial times, the post-civil war era, and right up to modern-day Bluffton. You will be amazed by all that has happened in Bluffton!



**MICHAEL REYNOLDS** is Bluffton born and raised. He has called Bluffton home for 58 years! About 14 years ago, Michael founded the "You Know You're from Bluffton When" Facebook history group and has since done countless hours of historical research and recorded interviews with some of Bluffton's older residents all to preserve Bluffton's history. By default (not by design), he has become the go-to person for Bluffton's history.

### HIS219: TIDE OF DEATH: THE HURRICANE OF 1893 IN BEAUFORT COUNTY



1 Session | Thursday | Feb 29 | 10:30AM-12:30PM  
In-Person only | Hilton Head campus

The Great Sea Island Storm remains the biggest natural disaster to befall the Beaufort District and the devastating consequences lasted well into the mid-20th century. The lecture features special collection materials from the Beaufort County Library.



**GRACE CORDIAL, ML, SL, CA** has been responsible for the management and operation of the *Beaufort District Collection at the Beaufort County Library* for almost 25 years. She selects and cares for research materials about Beaufort's long and storied history.

### HIS220: GULLAH HERITAGE TRAIL TOUR

1 Session | Wednesday | Mar 06 | 10AM-12:30PM  
In-Person only | Offsite (Hilton Head)



**Tour Fee \$32**

**Limited Enrollment – 30 (Random Draw Registration)**

Join us on a two-hour narrated bus tour and learn about the culture of the Gullah people and other Hilton Head activities. The tour is narrated by native Gullah folks who are descendants of former slaves dating back to years immediately after the Civil War. You will travel through the Gullah communities on Hilton Head Island when the island's landscape was only farmlands, dirt roads, wildlife, and natural waterways throughout and around the island. You will come away with an understanding of how the descendants of former enslaved people developed and maintained these communities on the then-isolated island.

### HIS221: THE BATTLE OF HONEY HILL (classroom program)

1 Session | Monday | Mar 11 | 9-10AM  
In-Person only | Bluffton campus



As Sherman's army began to approach Savannah, he requested the Union forces on Hilton Head stage an attack and, if possible, cut the Charleston- Savannah RR near Pocolaligo to prevent Confederate reinforcements out of Charleston from reaching the Savannah defenses. Last-minute preparations and confusion on the Union's part resulted in an unexpected and uncoordinated clash with well-entrenched Confederate forces on a ridge named Honey Hill. This one-hour lecture will present the elements of the battle and how they unfolded on the field. The significance of this little-known Confederate victory, the only Union defeat associated with Sherman's March to the Sea, will be examined in light of the contribution of African-American troops. For those registered by random draw, the post-class tour will visit the pristine, wooded battleground in Ridgeland with its original roads, earthworks, and trenches still intact.

**NOTE:** This class is free to OLLI members

### HIS222: THE BATTLE OF HONEY HILL TOUR

1 Session | Monday | Mar 11 | 10:15AM-1PM  
In-Person only | Offsite (Ridgeland)



**Tour Fee \$75**

**Limited Enrollment – 22 (Random Draw Registration)**

Following the one-hour lecture on the Battle of Honey Hill (See HIS222), those registered for the tour will be transported via a spacious touring van to visit the pristine, wooded battleground in Ridgeland with its original roads, earthworks, and trenches are still intact.

**NOTE:** Tour participants must be registered for HIS222 and will be selected by the random draw process. Please wear supportive, closed-toed shoes. Significant walking will be involved (approx. 1-2 miles), some on hilly terrain, and boggy areas of wetlands can be a factor.

### HIS223: PLUFF MUD PIONEERS AND HOW THEY CHANGED THEIR WORLDS

1 Session | Wednesday | Mar 13 | 10-11:30AM  
In-Person, Zoom | Bluffton campus



No fewer than nine former residents of the Hilton Head and Port Royal area over a nearly 500-year timespan were responsible for events or incidents that changed the course of history in their own lifetimes and redirected its path for the future to follow. Each of these events constituted a true first of its kind in American history. Learn how these trailblazers influenced the years that followed, and how their lives have affected life today.

### HIS229: THE SIEGE OF FORT PULASKI TOUR

1 Session | Monday | Apr 08 | 9AM-3:30PM  
In-Person only | Offsite (Savannah)



**Tour Fee \$110**

**Limited Enrollment – 22 (Random Draw Registration)**

With the invasion of Port Royal Sound and the establishment of the Headquarters of the Federal Department of the South on Hilton Head Island, the primary objectives for the Union were the closure of the Charleston and Savannah ports. The forts guarding the entrances to these ports were considered impregnable until a junior Union artillery officer revealed some new British technology that changed the possibilities dramatically.

The tour will visit the grounds and interior of Fort Pulaski and the Union artillery battery locations on Tybee Island, Georgia. It will review how the Union army, at the direction of the young officer, covertly mobilized and developed massive artillery batteries under cover of darkness so the Confederates would not realize how close the Union guns were and the force of the bombardment would be a surprise.

**NOTE:** Transportation is provided on a spacious touring van. Lunch is included. Wear comfortable clothing and supportive footwear.



**RICH THOMAS**, the owner of *Legacy Leadership and Legacy History Tours of the Lowcountry*, operating as *Hilton Head History Tours*, is a founding member of the *Hilton Head Island Institute*, a former board member of the *Heritage Library*, the *Santa Elena Foundation*, and the *Lowcountry Civil War Roundtable*. Rich is the founder and President of the Board of the *Friends of Honey Hill*, and a Co-Chair of the *South Carolina American Revolution Sestercentennial Commission's Committee of 99 for Beaufort District*.

## HIS224: CUMYAHS & BINYAHS: ST. HELENA ISLAND GULLAH GEECHEE FAMILY STORY

1 Session | Thursday | Mar 14 | 1-3PM  
In-Person, Zoom | Beaufort campus



Join us for a captivating slide presentation exploring the Gullah Geechee culture through the lens of the multi-racial Smalls Markovich family and Lynn Markovich Bryant's book, "I'm Black and I'm Proud: Wished the White Girl." Lynn Bryant will share her unique perspective as a Cumyah, highlighting the profound love and nurturing she received within the Gullah community. Meanwhile, her sister, Victoria Smalls, will delve into the rich tapestry of Gullah Geechee culture, showcasing its importance in their close-knit St. Helena Island, SC community and how it continues to shape her identity today. Don't miss this enlightening journey through the heart of Gullah heritage.



**LYNN BRYANT** is a former Beaufort County School District educator. Her education began in the segregated schools of Beaufort County while growing up in a Gullah community.



**VICTORIA SMALLS** is a Gullah native of St. Helena Island and the Executive Director of the Gullah Geechee Cultural Heritage Corridor National Heritage Area, which works to protect, preserve, interpret history, traditional cultural practices, heritage sites, and natural resources associated with the culture.

## HIS225: NATIVE AMERICANS IN THE LOWCOUNTRY

1 Session | Tuesday | Mar 19 | 10:30AM-12:30PM  
In-Person only | Hilton Head campus



Who lived on Hilton Head Island before colonial settlers invaded? For many years, the standard answer has always been a little bit foggy. Join archaeologist and historian Katherine Seeber as she works her way through the pretty complex answer. This class will discuss how Native people got to what is now South Carolina and when and how they decided to settle permanently in the Lowcountry. Shell rings, ancient villages, the invention of pottery in North America, and the development of the Cusabo tribes will be discussed as well as how and why the Yemassee came to this area in the 1700s.

**KATHERINE SEEBER** has been a professional archaeologist for the last 14 years and has focused on South Carolina coastal archaeology for the last six. In coastal South Carolina, Katherine has developed and maintained a long-term, community-based research project at Historic Mitchelville Freedom Park, the first free Black town in the south, located on Hilton Head Island. Katherine currently works as Coastal Discovery Museum's Diverse Narratives Educator and Archaeologist.

## HIS227: HISTORY AND MOVIE WALKING TOUR

1 Session | Tuesday | Mar 26 | 10AM-12N  
In-Person only | Offsite (Beaufort)

**Tour Fee \$10**

**Limited Enrollment – 20 (Random Draw Registration)**

Explore the fascinating history of Beaufort; learn about the many movies filmed here, churches, fauna, and ecology. Of course, our Prince of Scribes Pat Conroy will be showcased during this two-hour, two-mile walking tour through the National Historic District of Beaufort.



**JANET MCCAULEY** is a licensed tour guide, retired school administrator, former Program Administrator for OLLI, and avid volunteer.

## HIS228: HISTORIC MITCHELVILLE: PAST, PRESENT AND FUTURE

1 Session | Thursday | Apr 04 | 10:30AM-12:30PM  
In-Person only | Offsite (Hilton Head)

**Tour Fee \$10**

**Limited Enrollment – 30 (Random Draw Registration)**



Join a guided tour of Historic Mitchelville Freedom Park on Hilton Head to learn about the important history of the first self-governed town of formerly enslaved people in the United States. The guide will also discuss future plans for the park and the organization.

## HEALTH AND MEDICINE

### HME200: LEARNING CPR AND AED TRAINING

1 Session | Tuesday | Feb 06 | 1-2:15PM

In-Person only | Offsite (Hilton Head)

**Limited Enrollment - 17 (First Served Registration)**

Learn to save a life in just one hour! Hilton Head Island Fire Rescue will show you how you can learn CPR in just one hour through this Friends & Family American Heart Association class. You will also learn how to use an AED (automated external defibrillator). This class will offer lots of hands-on practice.

**NOTE:** The participant does not receive a CPR certificate in this program.



**CINDA SEAMON** is the Fire and Life Safety Educator for Hilton Head Island Fire Rescue, an American Heart Association CPR Instructor, and a nationally certified car seat technician. Cinda also volunteers for Hopeful Horizons and assists special needs youth.

### HME201: UNDERSTANDING AND NAVIGATING ANXIETY AND DEPRESSION

1 Session | Monday | Feb 12 | 1-3PM

In-Person only | Bluffton campus



Have you or your loved ones ever been diagnosed with anxiety or depression? Depression and anxiety are two mental health concerns plaguing 4 in 10 people in the U.S. This class will help you define and explore mental health issues related to depression and anxiety and learn how to manage the symptoms. We will discuss each diagnosis and what it means for you or your loved ones as well as causation and treatment applications. The goal is to walk away with a better understanding of depression and anxiety, navigate the symptoms and treatment possibilities, and learn simple practical applications. This class is not therapeutic, nor does it replace mental health counseling for those currently struggling.



**DR. MARY LACEY** has a master's degree in Marriage and Family Therapy from East Carolina University and a doctorate from Arizona State University. She is a board-certified counselor in NC and SC and has been in private practice for 25 years. Her specialty is working with women with anxiety and depression using Cognitive Behavioral Therapy.

### HME202: SAVE A HEART- LEARNING CPR AND AED TRAINING

1 Session | Wednesday | Feb 14 | 10-11:30AM

In-Person only | Bluffton campus

**Limited Enrollment - 17 (First Served Registration)**

Learn to save a life - you never know when an emergency may arise. USCB Fire Marshall and Safety Director will teach the most current CPR techniques. You will also learn how to use an AED (automated external defibrillator). This class will offer hands-on practice.

**NOTE:** The participant does not receive a CPR certificate in this program.

**PAUL BRENNAN** is the Fire Marshall and Safety Educator for USCB and an American Heart Association CPR Instructor.

### HME203: BALANCE TRAINING

1 Session | Wednesday | Mar 06 | 10AM-12N

In-Person only | Bluffton campus

**Limited Enrollment - 25 (Random Draw Registration)**



This program is both informational and experiential. Participants will learn valuable techniques to reduce the incidence of falling. This class will teach you techniques to assist in your single-leg balance skill. You will learn both static and dynamic movement patterns to improve your hip and leg strength. Part of the program will include tips to reduce your slips, trips, and falls. This investigative and fun class will offer different levels for everyBODY.

**NOTE:** Please come to class prepared to practice movements.



**SHELLY WELCH** works as a Wellness Consultant. She earned a B.S. in Physical Education with a concentration in Athletic Training from Norwich University, as well as a M.Ed. from Norwich University. Shelly is a certified Personal Trainer from the National Strength & Conditioning Association (NCSA-PT). She is also a certified group fitness instructor (AFAA) and yoga instructor (RYT - 200 hours).

### HME204: DIAGNOSING AND CAREGIVING A DEBILITATING, DISEASE – ALS

1 Session | Thursday | Mar 21 | 10:30AM-12:30PM

In-Person only | Hilton Head campus



Amyotrophic Lateral Sclerosis (ALS) is a disease of the motor neurons. There is no cure, nor a definitive diagnostic tool. It is often misdiagnosed and incorrectly treated as another condition for months or years. We will explore a full journey through ALS - from the early signs and potentially unnecessary surgical recommendations, through diagnostic approaches, to developing a comprehensive caregiving support system (i.e.: key resources, mobility, and communication equipment, life-sustaining aid), including difficult end-of-life decisions and lessons learned.



**BOB SCANNELL** is an ALS advocate and caregiver. Bob devotes much of his time to ALS advocacy, after recently retiring, and having spent years being the full-time caregiver for his wife, Beth Ann, who passed from ALS. He volunteers with the I AM ALS Community Outreach Team, the local ALS Association, and works with other caregivers in his community.

### HME206: THE OBESITY EPIDEMIC

1 Session | Monday | Apr 08 | 10-11:30AM

In-Person only | Bluffton campus

Obesity and Type 2 diabetes are now considered international epidemics. In the United States, obesity tops smoking as the number one cause of preventable death. Not solely the result of a person eating too much and moving too little - obesity is a far more complex disease. Learn how the role of genetic, environmental, psychological, and behavioral factors play in obesity. Hear how an evidence-based, personalized approach to obesity treatment combines nutrition, physical activity, behavior, and medication to help achieve long-lasting results and improved health.



**YVETTE-MARIE PELLEGRINO, M.D.** is board-certified in family and obesity medicine and brings a focus on healthy living to help patients prevent illness and treat acute and chronic illnesses. In addition to preventive care, she holds particular expertise in weight management, diabetes, and metabolic disorders including obesity, high blood pressure, high blood triglycerides, low levels of HDL cholesterol, and insulin resistance.

### HME205: PALLIATIVE CARE AND HOSPICE CARE 101

1 Session | Wednesday | Apr 03 | 10AM-12N

In-Person only | Beaufort campus

With end-of-life care and patient wishes becoming all the buzz in the medical spotlight, it is important to understand the myths and realities of these "dirty words." What are hospice and palliative care? What are the choices as you begin to navigate aging and the medical system? Do you know what questions you should be asking? This course will be upbeat and focus on living while learning about palliative care, hospice care, and grief support. The difference between palliative and hospice care, grief support in our community, volunteer opportunities, and the hospice inpatient facility - Caroline's Cottage will be part of the discussion by a group of Friends of Caroline experts.



**LINDSAY ROBERG**, President/CEO of Friends of Caroline, BSN, MBA, CHPN, RN, will be joined by **LANELLE FABIAN**, CVA, Director of Community Engagement; **KERIANN GINTER**, Director of Development; and **STEVE SCUDDER**, Coordinator of Support Services for Friends of Caroline.



## INTEREST GROUP

**ING200: CLAY MASK WORKSHOP**

1 Session | Friday | Jan 19 | 10-11:30AM

In-Person only | Beaufort campus

**Supply Fee \$25****Limited Enrollment - 12 (First Served Registration)**

Create a customized clay mask, formulated especially for your skin type. Choose from effective skincare ingredients including natural clays, oils, and extracts to create the perfect mask for your face or body. Our selection of oils, from nuts and fruits, helps your skin maintain a balanced water level which translates into less itchy, healthy-looking, glowing skin. Other oil options quickly absorb into the skin to reduce the size of pores! Mix and match - and add plant-based extracts and the perfect blend of essential oils just for your skin type and needs.

**NOTE:** You will walk away with a 7oz. handmade clay mask in a beautiful glass vessel.



**CARI PHELPS**, is an award-winning designer and branding expert based in Savannah. Her products have been featured in national publications including "Southern Living" and "Vogue." Through her research she learned that Tybee is the Euche Indian word for salt. This history inspired Cari to develop this natural bath and body care line using the scents of regional botanicals and natural ingredients, including Atlantic sea salt, to create a unique line of bath and body care products.

**ING201: STAYING SAFE AND SOUND IN THE 21ST CENTURY**

1 Session | Thursday | Feb 01 | 10:30AM-12:30PM

In-Person only | Hilton Head campus



The course covers how to protect yourself and your family in a variety of venues. The instructor will cover how to develop and implement both proactive and reactive plans for enhancing personal security at home, in the workplace, while traveling, at entertainment venues, and in high-crime areas. Emphasis will be placed on maintaining a low profile, assessing risk, and how to avoid situations that may increase your threat level. Specific examples of actual events will be used to make the presentation more practical rather than theoretical.



**MIKE MADDALONI** was a Secret Service agent and VP of Global Security for Wyeth Pharmaceuticals. In addition, he was President of BSSI, a security consulting firm. He has a B.S. in Management and served in the U.S. Marine Corps during the Vietnam War.

**ING202: WHAT IS ARTIFICIAL INTELLIGENCE?**

1 Session | Tuesday | Feb 06 | 10:30AM-12:30PM

In-Person only | Hilton Head campus



Artificial Intelligence (AI) has been in the news for a long time, but now if you buy a new Mac or PC, it's in your device! Bruce Cain will give you an overview answer to the question "What is Artificial Intelligence?" and also help you understand what ChatGPT is and why it is important. He will also demonstrate some AI tools to show you how AI actually works. Also, the last several months have been busy months in the press for AI and Bruce will give you "the latest!"



**BRUCE CAIN** had a career spanning more than 47 years in the information technology field doing everything from computer operations (when computers filled entire rooms) to computer programming, to field technical support, and to computer security auditing. He has worked on IBM mainframes, Unix systems, Linux systems, and Windows systems.

**ING203: YOGA FOR HEALTHY AGING**

2 Sessions | Tuesday, Thursday | Feb 20, Feb 22 | 10AM-12N

In-Person only | Beaufort campus

**Hands-On Fee \$10****Limited Enrollment – 20 (Random Draw Registration)**

Jo Heckert of Go Yoga Jo, LLC will teach you how to improve functional mobility, strength, flexibility, balance, body awareness, and proprioception through yoga. We may not be able to increase our life span, but we can increase our health span building more ease in our bodies and minds. Explore some of the do's and don'ts in yoga when focused on bone health and aging. Jo will bring a variety of props, including blocks and straps, to facilitate your practice. No prior experience is necessary.



**JO HECKERT** is passionate about teaching yoga to seniors. As we age, we require modifications, adaptations, and a focus on functional mobility for independence and quality of life. Jo teaches in-person in Beaufort, SC, online, and a mobile yoga studio in the Lowcountry. Visit: <https://www.goyogajo.com/>

**ING204: LEGO® IN ART**

1 Session | Tuesday | Mar 05 | 10:30AM-12:30PM  
In-Person only | Hilton Head campus



This course examines LEGO®, the premier toy manufacturing company in engineering design, innovation, and education oriented around a set of core values and ideas. The presentation considers the specific topic of LEGO® as an art medium in methods and ways that are both outside of the box and innovative. This course provides an experience in the unique artistic methods that the LEGO® Group incorporates in inspiring and developing the builders of tomorrow. Put an artistic spin on this childhood classic by discovering techniques to create structurally solid and aesthetically captivating sculptures.



**CHRISTIAN SUDDUTH**, owner of *Sno Cones By Chris and the Lowcountry's only LEGO® gallery museum*, shares his passion and knowledge of creating art through the most popular children's toy in the world. You will find his custom creations on display in several locations on Hilton Head Island.

**INTERNATIONAL STUDIES**

**IST200: TROUBLED WORLD AND HOW TO RESPOND**

1 Session | Monday | Mar 25 | 1-3PM  
In-Person, Zoom | Bluffton campus



China threatens Taiwan; Russia invades Ukraine; Hamas terrorizes Israel; Iran stokes proxies; North Korea waits for its opportunity; and terrorists - both foreign and domestic - threaten everywhere. What are we to do? This presentation touches on the "compounding effect" of each of these threats and sets the stage for a group discussion on how we might avoid World War III - particularly when we Americans are more divided than at any other time of our lives.



**CRAIG WHELDEN**, retired Major General, spent 30 years in the U.S. Army and another nine as a member of the Senior Executive Service (SES) with the U.S. Marine Corps. Along the way, he led thousands of soldiers, sailors, and marines at each level from Lieutenant to General Officer to Senior Executive - with 10 years in Europe and another 12 in the Pacific.

**LEGAL**

**LEG200: SECOND AMENDMENT - CURRENT ISSUES AND CASES**

1 Session | Monday | Mar 25 | 10AM-12N  
In-Person only | Bluffton campus



Judge Michael Hudock will explore the current standard for review of laws and regulations affecting rights under the Second Amendment and examine cases winding their way through the courts that potentially limit an individual's Second Amendment rights.



**HONORABLE MICHAEL HUDOCK** graduated from the University of Pittsburgh School of Law. In his career, he has served as a Public Defender, an Assistant District Attorney, and a trial court judge in the 17th Judicial District of Pennsylvania.

**LANGUAGE CLASSES**

**CONVERSATIONAL SPANISH I**

**BLUFFTON CAMPUS**  
Hargray Building | Room 204  
JAN 16 - APRIL 9 | TUESDAY  
7 - 8:30 pm  
\$225 for OLLI members

**CONVERSATIONAL SPANISH II**

**BEAUFORT CAMPUS**  
Center for the Arts | Room 101  
JAN 18 - APRIL 11 | THURSDAY  
7 - 8:30 pm  
\$225 for OLLI members

**OLLI members must call 843.208.8246 to register**

Go to [www.uscb.edu/continuingeducation](http://www.uscb.edu/continuingeducation) for more course information and coursebooks





## LEG201: THE U.S. SUPREME COURT: RECENT DECISIONS AND THE CURRENT TERM

3 Sessions | Monday | Mar 25, Apr 01, Apr 08 | 3-5PM  
In-Person only | Bluffton campus



This course returns to OLLI for another installment of lively discussion and debate. The course will focus on United States Supreme Court decisions from the Court's most recent term and will cover a wide variety of topics, with a particular emphasis on civil rights and liberties. Students will be provided with excerpts from Court decisions to read in advance of class.



**STEPHEN MEYER** is a Bluffton attorney who earned his Juris Doctor, magna cum laude, from the University of South Carolina. While engaged in the full-time private practice of law, Steve devotes his scholarly interests to the analysis of U.S. Supreme Court decisions and the impact of these decisions on the daily life of the American public.

## LITERATURE

### LIT200: OLLI READS AND WATCHES! JOSEPHINE TEY "THE DAUGHTER OF TIME" (1951)

2 Session | Monday, Wednesday | Jan 29, Jan 31 | 1-3:30PM  
In-Person only | Beaufort campus

Considered one of the finest mystery novels of all time, Josephine Tey's "The Daughter of Time" (1951) is a rousing tale of historical detective work. Inspector Alan Grant, laid up with a broken leg, becomes fixated on the portrait and story of the much-maligned Richard III. He works tirelessly with a young American scholar to determine the truth or not of Richard's guilt. Is he the monster history has made him? Join in on this age-old mystery as we mine British history and learn what the Richard III Society is all about. We will also watch the 1996 film "Looking for Richard III" starring Al Pacino.

**NOTE:** Please read the book in advance of class.

### LIT202: BOOK AND FILM: JANE AUSTEN'S "LADY SUSAN"

2 Sessions | Monday | Apr 29, May 06 | 1-3:30PM  
In-Person only | Bluffton campus

Join Deb Barnum for a lively book discussion of "Lady Susan" (Session 1) and a viewing of the film "Love & Friendship" (Session 2). In "Lady Susan," Jane Austen crafted her most amoral character, a precursor to Thackeray's Becky Sharp, only worse, and nothing like Austen's other delightful heroines. A short epistolary novel, "Lady Susan" is a must-read to gain an understanding of the budding novelist at work. "Love & Friendship," the 2016 period comedy by Whit Stillman and starring Kate Beckinsale, is a delightful take on this devious character you will love to hate.

**NOTE:** Attendees are asked to please read the book prior to the first class. Discussion questions will be emailed in advance.



**DEBORAH BARNUM** is a previous snowbird (VT / SC), best friends with Jane Austen (blogger), compiles annual Frances Burney bibliographies, used bookstore owner (collectible books), OLLI member and instructor, leads classic literature book groups, law librarian, gardener, hiker, and traveler.

### LIT201: BOOKS OF SOUTH CAROLINA

1 Session | Thursday | Feb 29 | 1-3PM  
In-Person, Zoom | Beaufort campus



You are never too old to learn more about our state. Come and share lovely picture books exploring our area. You will be introduced to new books of historical fiction, Lowcountry fairy tales, and a South Carolina alphabet book. This presentation was shared with new teachers in Beaufort County and the 2023 Summer Institute at USCB.



**DR. RENARTA TOMPKINS**, Associate Professor of Literacy, University of South Carolina Beaufort, has a Ph.D. in Educational Studies with a Literary Specialization from Emory University in Atlanta.

**MUSIC**

**MUS200: INSIDE THE MUSIC: USCB CHAMBER MUSIC WINTER & SPRING CONCERTS**

1 Session | Friday | Jan 26 | 10AM-12N  
In-Person only | Beaufort campus

**MUS203: INSIDE THE MUSIC: USCB CHAMBER MUSIC WINTER & SPRING CONCERTS**

1 Session | Friday | Mar 01 | 10AM-12N  
In-Person only | Beaufort campus

**MUS205: INSIDE THE MUSIC: USCB CHAMBER MUSIC WINTER & SPRING CONCERTS**

1 Session | Friday | Apr 05 | 10AM-12N  
In-Person only | Beaufort campus

Program note writer Michael Johns presents a pre-concert conversation on the composers and music to be heard for each USCB Chamber Music concert. Multiple recorded excerpts and commentary will acclimate listeners as to what they can expect to hear at the

upcoming concerts on Sunday, January 28, March 3, and April 7.

**NOTE:** These classes are free and open to the public. Registration is strongly suggested. Please visit the Chamber Music website for more concert information. <https://www.uscbchambermusic.com/>



**MICHAEL JOHNS, DMA**, received music degrees from the New England Conservatory and Temple University. He has performed on French horn with symphony, ballet, and opera orchestras, in recital and chamber music. Music is his lifelong vocation and avocation.

**MUS201: WORLD-CLASS CHAMBER MUSIC CONCERTS AT USCB**

1 Session | Sunday | Jan 28 | 5-7PM | Beaufort campus



The New Year will open with a celebration of 100 years of George Gershwin's amazing and AMERICAN "Rhapsody in Blue." Cellist Jan Vogler and violinist Keven Zhu will join Director and Pianist, Andrew Armstrong as the afternoon

## 2023 - 2024 Concert Dates

---

<div style="text-align: center; margin-bottom: 20px;"> <p><b>Lowcountry Community Concert Band</b></p> </div> <p style="text-align: center;">February 27, 2024 USCB Center for the Arts, Beaufort 7:00 pm</p> <p style="text-align: center;">April 28, 2024 Joint concert with the Lowcountry Jazz Band, USCB Center for the Arts, Beaufort 7:00 pm</p> <p style="text-align: center;">April 30, 2024 Magnolia Hall, Sun City 7:00 pm</p>	<div style="text-align: center; margin-bottom: 20px;"> <p><b>Lowcountry Community Jazz Band</b></p> </div> <p style="text-align: center;">January 19, 2024 Pinckney Hall, Sun City 7:30 pm</p> <p style="text-align: center;">January 21, 2024 USCB Center for the Arts, Beaufort 4:00 pm</p> <p style="text-align: center;">April 28, 2024 Joint concert with the LCCB USCB Center for the Arts, Beaufort 7:00 pm</p> <p style="text-align: center;">May 5, 2024 Church of the Palms, Okatie 4:00 pm</p>
---	---

ALL CONCERTS ARE FREE AND OPEN TO THE PUBLIC

For more information about the USCB OLLI Lowcountry Community Concert Band, please visit our website @ [www.ollilccb.com](http://www.ollilccb.com)

continues with Bach, Paganini, and Mancini. The concert will conclude with the heart-throbbing passion of Tchaikovsky.

**NOTE:** OLLI members will receive a \$10 discount on tickets. No PayGo fee is applied. Register with OLLI and Chamber Music will call you preceding the concert to have you choose your viewing platform and purchase tickets.

### MUS202: BIRD SONG AND HUMAN MUSICAL INSPIRATION

1 Session | Thursday | Feb 15 | 10AM-12N  
In-Person only | Beaufort campus



This course begins by looking at what birdsong is, and how and why it is produced. There are similarities between human and bird music and the historical record of human fascination with birds and their songs. Hear samples of 14 excerpts across 800 years of notated human music; music which seeks to literally reproduce the acoustic sound of birdsong or recreate the emotional aura generated by it. The presentation is accompanied by slides and dozens of musical examples.



**MICHAEL JOHNS, DMA**, received music degrees from the New England Conservatory and Temple University. He has performed on French horn with symphony, ballet, and opera orchestras, in recital and chamber music. Music is his lifelong vocation and avocation.

### MUS204: WORLD-CLASS CHAMBER MUSIC CONCERTS AT USCB

1 Session | Sunday | Mar 03 | 5-7PM | Beaufort campus



A full stage of international talents will be on hand for the March 3rd concert with clarinetist Alexander Fiterstein, hornist R.J. Kelley, violinist Amy Schwartz Moretti, violist Gabriela Diaz, cellist Raphael Bell, and pianist Andrew Armstrong. They will perform a program of Hindemith, Price, Rachmaninoff, Gershwin, and Saint-Saëns. The second half of the program will be the formidable and amazing Dohnányi C major, Op.37 sextet.

**NOTE:** OLLI members will receive a \$10 discount on tickets. No PayGo fee is applied. Register with OLLI and Chamber Music will call you preceding the concert to have you choose your viewing platform and purchase tickets.

**USCB CHAMBER MUSIC**  
THE LOWCOUNTRY'S FINEST CLASSICAL MUSIC SERIES

**SCHEDULE**  
January 28  
March 3  
April 7

**USCB CENTER FOR THE ARTS | BEAUFORT CAMPUS**  
**CALL 843.208.8246 TO PURCHASE TICKETS**  
**(\$10 OFF TICKET FOR OLLI MEMBERS)**  
[www.uscbchambermusic.com](http://www.uscbchambermusic.com)

### MUS206: WORLD-CLASS CHAMBER MUSIC CONCERTS AT USCB

1 Session | Sunday | Apr 07 | 5-7PM | Beaufort campus



Don't miss the final concert that will include the world premiere of a piece by our first-ever female composer and first-ever saxophonist, Alison Shearer. She will be joined by violinists Abigél Králik and Karl Stobbe, violist Joan DerHovsepien, cellist Ani Aznavoorian, double-bassist Maggie Cox, and Director and Pianist Andrew Armstrong for Alison Shearer's premiere piece and music of Rachmaninoff and Saint-Saëns.

**NOTE:** OLLI members will receive a \$10 discount on tickets. No PayGo fee is applied. Register with OLLI and Chamber Music will call you preceding the concert to have you choose your viewing platform and purchase tickets.

## PERSONAL GROWTH AND DEVELOPMENT

**PGD200: UPLIFTING FILM -  
THE HIDDEN POWER OF PURPOSE**

1 Session | Tuesday | Feb 27 | 10AM-1PM  
In-Person only | Beaufort campus

Join OLLI members in the Center for The Arts Auditorium for a perfect uplifting film experience. This film is a powerful story featuring Deepak Chopra and Dr. Sanjay Gupta, narrated by Debbie Allen, and features stories of ordinary people who found health and happiness at all ages by finding a purpose. Scientists explain having a purpose directly impacts our health and longevity. The Hidden Power of Purpose was produced and directed by award-winning filmmaker Elliot Kotek and AARP Studios. View the film and stay afterward for an engaging discussion with Cindy Bledsoe as moderator.



**CYNTHIA BLEDSOE** is a futurist, actor, educator, and speaker for social good in the health/wellness, film/TV, and social impact sectors. She is a certified integrative wellness practitioner who teaches meditation, creativity, human potential, and self-care wellness through global online and in-person retreats and experiences. Cindy earned a M.A. in Wisdom Studies with a concentration in Education and is a certified nonprofit consultant.

**PGD201: EXAMINE OUR LIVES AND FIND  
PURPOSE - WHAT I DID**

1 Session | Thursday | Mar 14 | 10:30AM-12:30PM  
In-Person only | Hilton Head campus

Learn how a hobby, that blossomed late in David's professional career and sustained him in many ways in retirement, helped him develop new skills and talents that expanded his social circle and network. Hear details on his passion for building and restoring scale-model vehicles and how setting up a workshop and the tools and materials needed helped him find purpose in his life. David will be displaying some of his model works for your viewing.



**DAVID ARGENT** retired after a lengthy career in the graphic arts industry. He worked in England, Canada, and the USA and traveled extensively on assignments. David was involved in end-to-end process improvements for packaging suppliers serving global consumer product companies.

## PHILOSOPHY

**PHI200: MONTHLY PHILOSOPHY  
DISCUSSION GROUP**

1 Session | Wednesday | Jan 24 | 1-2:30PM  
In-Person only | Bluffton campus

**PHI201: MONTHLY PHILOSOPHY  
DISCUSSION GROUP**

1 Session | Wednesday | Feb 28 | 1-2:30PM  
In-Person only | Bluffton campus

**PHI203: MONTHLY PHILOSOPHY  
DISCUSSION GROUP**

1 Session | Wednesday | Mar 27 | 1-2:30PM  
In-Person only | Bluffton campus

**PHI204: MONTHLY PHILOSOPHY  
DISCUSSION GROUP**

1 Session | Wednesday | Apr 24 | 1-2:30PM  
In-Person only | Bluffton campus

A new topic will be introduced each class for this group to discuss the intellectual and moral positions that underlie the issue. By seeking to present the philosophical bases of different sides to relevant topics, we hope we may all be able to develop a deeper understanding of the questions confronting us. If you are interested in discussing various topics through a philosophical framework, please join this thought-provoking, interactive group. The new topic will be shared with participants a week before class.

**NOTE:** This class is free to all OLLI members.



**PETER MCALLISTER** holds a Ph.D. in Economics and Education from Columbia University. Peter spent 26 years managing analytical units for a multinational bank. Peter also has taught at the high school and college levels.

## PHI202: UNDERSTANDING WESTERN PHILOSOPHY - PLATO AND ARISTOTLE

4 Sessions | Thursday | Mar 07, Mar 14, Mar 21, Mar 28  
10:30AM-12N | In-Person only | Beaufort campus

The tug of war between the ideas of Plato and Aristotle has exerted a profound effect on Western civilization. This course surveys these thinkers' positions regarding the nature of the universe, how we can know the truth, the proper forms of government, and how to live a good life. This course also illustrates how these thinkers' opposing ideas have influenced the development of Western science, ethics, religions, and politics. This course does not require any formal training in philosophy.

**NOTE:** Start time is 10:30 a.m.



**PETER MCALLISTER** holds a Ph.D. in Economics and Education from Columbia University. Peter spent 26 years managing analytical units for a multinational bank. Peter also has taught at the high school and college levels.

## RELIGION

### REL200: THE MOST CONTROVERSIAL MOMENTS IN JEWISH HISTORY



1 Session | Monday | Mar 04 | 10AM-12N  
In-Person only | Bluffton campus

No religion is a stranger to controversy; but what are the most controversial moments in Jewish history, the moments where the future of the religion lay in doubt, where anxiety turned to anger and desperation, and where the future direction of Judaism was formed? We live in a culture where we hide from controversy. It is now time to embrace it.



**RABBI ROBERT HAAS**, a native of McAllen, TX, became the 14th spiritual leader of Congregation Mickve Israel in Savannah, Georgia in 2012. He is a sought-after comedian, lecturer, preacher, and interfaith leader who regularly speaks and performs for organizations, radio shows, colleges, theaters, houses of worship, and institutions.

### REL201: FATE - AN IRRESISTIBLE FORCE?



4 Sessions | Thursday | Mar 07, Mar 14, Mar 21, Mar 28  
3-5PM | Zoom only

We use the term "fate" in many contexts. It even appears in its classical form in a Christmas song. You'll delve into "fate" drawing on ancient Near Eastern, Greek, Rabbinic, early Christian, and popular writings. Among our core issues: Is "fate" real or a consensus, and how should we define it? Is it autonomous, or can it be altered? Is it one idea or several forms that coexist and conflict? And you'll probe whether "fate" is cold and impersonal, or essential to our deepest needs and emotions.

**CRAIG MILLER** holds a doctorate in theology and biblical/classical languages, teaching for more than 40 years, including 20+ years for OLLI. He has worked to make biblical/classical resources more accessible worldwide and served as an advisor to the National Classical League. He is also a 30-year CIA careerist.



## NATIONAL OLLI CURRICULUM

WINTER AND SPRING TERM  
COURSES AVAILABLE ON  
ZOOM ONLY

Details to be communicated in the weekly OLLI email



## SCIENCE

**SCI200: GEOLOGICAL OVERVIEW OF THE SOUTH CAROLINA LOWCOUNTRY**

1 Session | Monday | Jan 22 | 10-11:30AM  
In-Person only | Beaufort campus



Learn about the geological history of SC's Lowcountry from the opening of the Atlantic Ocean to today in the presentation covering the last 180 million years of South Carolina's geologic history from the start of the Atlantic Ocean through many changes in sea level. The focus will be on what is under our feet in the Lowcountry covering 6,000+ square miles.

**WILL DOAR** has a B.S. and M.S. degree in Geology from East Carolina University, a Ph.D. in Geology from the University of South Carolina, and Twenty-Seven years with the South Carolina Geological Survey. Born and mostly raised in NC.

**SCI201: YOU SHOULD KNOW THIS EARTH**

1 Session | Thursday | Feb 22 | 10:30AM-12:30PM  
In-Person, Zoom | Hilton Head campus



Come learn about the science behind how the earth works. What is the reason for the seasons? Why are the ocean tides 50 minutes later each day? Why do rain events produce more rain today than in the past? How do hurricanes help relieve some global warming? Why does the moon go through phases? What causes eclipses? What is a "shooting star?" What are exoplanets? What is a biogeochemical cycle? What gases are greenhouse gases and how do they work? These and other questions will be answered.



**MARIE MCCLUNE** is a lifelong nature lover and lifelong learner. She has worked as a geologist, environmental educator, and high school science teacher, teaching Earth Science and AP Environmental Science. She is presently a docent at the Coastal Discovery Museum, a Lowcountry Master Naturalist, a Lowcountry Master Gardener, and a member of OLLI for many years.

**SCI202: IN THE MOUTH OF THE WHALE RESCUING AN ENTANGLED HUMPBACK**

1 Session | Monday | Mar 04 | 1:30-3:30PM  
In-Person only | Hilton Head campus

As a marine biologist, in 1976, Dr. Jimenez researched the Caribbean waters. He was one of the first known biologists to document the marine mammal population of the waters surrounding the Dominican Republic and Puerto Rico. It is from there he expanded his research, which included rescue work with the Canadian government and in other parts of the world, taking care of stranded and beached whales, and performing necropsies. He'll bring an insightful look into the habits and behavioral migration of whales, manatees, and other marine mammals. Learn about his personal experiences and encounters, including how it actually felt to step into the mouth of the largest animal on the planet.



**JUAN CARLOS JIMENEZ, Ph.D.**, retired mathematics professor at Arizona State University and graduate of the University of Massachusetts, Amherst, was a marine biologist conducting research/rescue of whales/manatees worldwide. He owns *Ta-ca-rón*, a boutique wine/cigar/gourmet tapas establishment in Okatie, SC.

**SCI203: MATHEMATICS 101 - AN ADULT TUTORIAL**

1 Session | Friday | Mar 29 | 1-3PM  
In-Person only | Bluffton campus



Most of us took math classes many years ago. Mathematics 101 is an adult tutorial that will be a fun (even if you dreaded math years ago) overview of the importance of mathematics in everyday life. It can also assist you in helping children understand mathematics. This class provides a broad overview of mathematics and its applications and will discuss the teaching and learning of key mathematical concepts. No prerequisite knowledge of mathematics is required. Mathematics concepts include counting, numbers, operations, place value, basic shapes, equations, expressions, variables, functions, limits, derivatives, and integrals.



**DR. VOLKAN SEVIM** is USCB's Associate Professor of Mathematics and Program Coordinator for Mathematics.

## SPORTS

**SPO200: PENN CENTER KAYAK PADDLE AND TOUR**

1 Session | Thursday | Feb 15 | 1:30-4:30PM

In-Person only | Offsite (Beaufort)

**Tour Fee \$55****Limited Enrollment – 18 (Random Draw Registration)**

Join Beaufort Kayak Tours as you paddle the salt marshes of Wallace Creek for a unique view of the Penn Center. After the kayak paddle, you will tour Darrell Hall and the Penn Center in honor of Black History Month. This trip is in protected waters and about 3.3 miles in length. Beaufort Kayak Tours will supply the instructors, kayaks, paddles, and PFDs. Single and tandem kayaks will be assigned by Beaufort Kayak Tours at the time of launch. Every effort will be made to accommodate your kayak request.

**SPO201: EBENEZER CREEK KAYAK PADDLE**

1 Session | Monday | Mar 18 | 10:30AM-1PM

In-Person only | Offsite (Rincon, GA)

**Tour Fee \$55****Limited Enrollment – 18 (Random Draw Registration)**

This excursion takes place on an amazing blackwater creek, through an old-growth cypress and tupelo forest. The journey will take you deep into the swamp, as you learn the differences between cypress and tupelo hardwood trees and the purpose of this area. Beaufort Kayak Tours will provide instructors, kayaks, paddles, and PFDs. Single and tandem kayaks will be assigned at the time of launch. Every effort will be made to accommodate your kayak requests.

**SPO203: CAROLINA SPIDER LILY KAYAK ACE BASIN TOUR**

1 Session | Thursday | Apr 25 | 2:30-5PM

In-Person only | Offsite

**Tour Fee \$55****Limited Enrollment – 18 (Random Draw Registration)**

Join Beaufort Kayak Tours as they lead you down Hobnoy Creek to the Combahee River to look for the

fabulous Carolina Spider Lily. Get up and close to this lily for a great photo opportunity while learning about the rice culture and history in the area. This trip is in protected waters and about 3.5 miles in length. Beaufort Kayak Tours will supply the instructors, kayaks, paddles, and PFDs. Single and Tandem kayaks will be assigned by Beaufort Kayak Tours at the time of launch. Every effort will be made to accommodate your kayak request.



**TERI POHORSKY** has over 30 years of kayaking and teaching experience, holding a master's degree as a reading specialist.

**JIM POHORSKY** has experienced the Lowcountry for over 25 years from a kayak. They are graduates of Iowa State University.

**OLLI DAY***on The Court*

NCAA DIV II

Join OLLI for an exciting day of basketball featuring USCB vs Georgia Southwestern!

**JAN  
13****LOCATION**  
USCB BLUFFTON  
CAMPUS REC CTR**TIME****1:30 WOMEN  
3:30 MEN**

SPONSORED BY:

**50 RESERVED SEATS****\$ 5 OLLI MEMBER  
\$ 10 OLLI GUEST**

First served registration



**SPO202: NCAA ATHLETICS TODAY**

1 Session | Monday | Apr 01 | 10-11:30AM

In-Person only | Bluffton campus



The National Collegiate Athletic Association (NCAA), founded in 1906, is a nonprofit organization regulating student athletics among more than 1,100 schools in the United States and Canada. It also organizes the athletic programs of colleges and helps over 500,000 college student-athletes who compete annually in sports. How do coaches navigate in today's world with athletes' social media, national and cultural influences, the impact of "NIL" (Name Image Likeness) and the portal all while making sure they are safe and successful student-athletes? Meet Hall of Fame Women's basketball coach, Sharon Versyp, and Terry Kix for this interesting perspective behind the scenes of college athletics today.



**SHARON VERSYP** - *Purdue's all-time winningest head coach, came out of retirement to develop USCB's first NCAA Division II women's basketball program. Coach Versyp led Purdue to four Big Ten Tournament championships and two NCAA Tournament Elite Eight appearances in 15 years.*



**TERRY KIX** was *Director of Basketball Operations with the Boilermakers. She was head field hockey coach for 15 years and three years as the senior women's administrator at the University of Maine prior to Purdue. Currently, she is assisting USCB's basketball program.*

**TRAVEL****TRA200: LYON - FRANCE'S MOST UNDER-RATED CITY**

Session | Thursday | Jan 25 | 10AM-12N

In-Person only | Beaufort campus

When you think of France, you normally think of Paris. Pressed for another answer, you might come up with Nice, Bordeaux, the D-Day Beaches of Normandy. But Lyon? It is usually much lower on the list - but it shouldn't be. Arguably the gastronomic capital of the country, and home to several UNESCO World Heritage sites, Lyon tends to fly under the tourism radar. Surprises await you around every corner: old and new at the same time, leisurely and exciting, urban with a small-town vibe. Join us as we learn something about its history and its present-day life.

**TRA201: KEY WEST - CLOSE TO HOME BUT FAR FROM NORMAL**

1 Session | Friday | Jan 26 | 10AM-12N

In-Person only | Bluffton campus

James William Buffet may have recently left us, but the place that inspired so much of his music (and his life) remains - in all of its strange and unusual glory. Key West may be small (2 miles by 4 miles) but is so different from the rest of the state in which it is located that it has to be experienced to be believed. Military base, fishing village, gay mecca - even a separate country for a few short minutes - writer Hunter S Thompson once said it was "where the weird turn pro." Jimmy wasn't the only person to leave his mark on the island - join us to meet the entire cast of characters over its almost 200-year history.



**JIM NICHOLSON** is an OLLI instructor for several South Carolina OLLI Lifelong Learning institutions including OLLI Furman, OLLI Clemson, and Lifelong Learning at Wofford on a variety of topics.



## TRIPS

To sign up for OLLI trips please register with OLLI first, then go to

<https://weekendgetawaysonatankofgas.com>

to complete your registration and payment details. Scottie Davis will then confirm your place on the trip.

Any questions regarding the below trips are to be directed to Scottie Davis via her website.

**TRIP201: OLLI GOES TO MIDDLETON PLACE**

1 Session | Thursday | Apr 04 | 8AM-6PM

In-Person only | Offsite (Charleston)



**Tour Fee: \$174 per person**

Stroll the magnificent gardens of historic Middleton Place with sheep grazing lazily on the front lawn; visit Eliza Pinckney's house and view the exhibit on slavery; explore the stable yards with animals that would have been on the plantation in the 1800s; and watch demonstrations in the blacksmith, carpenter, textile, and pottery shops. On your own, tour the House Museum where collections of paintings, furniture, silver, and documents dating back to the 1700s reflect the lives of the Middleton families who resided at Middleton Place. Lunch will be provided.

**Included:** transportation via luxury coach (with bathroom and wi-fi on board), entrance to Middleton Place, lunch, snacks, and bus driver's tip.

**Reservation/Payment Deadline:** Friday, March 15, 2024 (or until filled with 48 travelers).

**TRIP202: OLLI GOES TO MEPKIN ABBEY  
A TRAPPIST MONASTERY**

1 Session | Wednesday | May 01 | 7:30AM-5:30PM

In-Person only | Offsite (Charleston)



**Tour Fee: \$169 per person**

Visit the serene abbey on the banks of the Cooper River; observe a short noonday service in the pristine chapel; linger in the memorial gardens where Henry and Clare Boothe Luce, the last owners of the property, are buried.

Lunch will be in nearby Summerville. Included: Transportation, visit to Mepkin Abbey, lunch, snacks, and bus driver's tip.

**Reservation/Payment Deadline:** Thursday, April 11, 2024 (or until filled with 48 travelers).



**SCOTTIE DAVIS** is an avid OLLI instructor, travel writer, and owner of *Weekend Getaways On A Tank of Gas*.

## WRITING

**WRI200: CREATIVE WRITING COFFEE HOUSE**

1 Session | Wednesday | Feb 07 | 1:30-3:30PM

In-Person only | Bluffton campus



Join Dr. Ellen Malphrus, author, poet, USCB's Writer-in-Residence, and Winner of the 2023 Carolina Trustees Professorship, along with her stellar creative writing students for an informal "coffee shop" chat complete with treats. Listen to Ellen and her students read from their work and tell about their writing inspiration, what writing workshops are like, and their work on USCB's five-time national award-winning literary journal, "The Pen." You're sure to come away nourished and refreshed by their talent and enthusiasm.



**DR. ELLEN MALPHRUS** is USC Carolina Trustees Professor (2023), Professor of the Year (2022), and USCB's Writer in Residence. She studied with James Dickey for her MFA in Creative Writing and holds a Ph.D. in 20th-century American Literature. Among numerous publications, she is the author of the novel "Untying the Moon (foreword by Pat Conroy)."

**WRI201: PROVEN METHODS FOR HOW  
TO BE PUBLISHED**

1 Session | Friday | Mar 22 | 1-3PM

In-Person only | Bluffton campus



As a successful publisher for 28 years, Cathy Brophy can teach you what you need to know to get published. Join her for a trip behind the book covers to see what publishers need and want to see before they offer you a contract.



**CATHY BROPHY** owned and operated Warren Publishing for 28 years. Her background is in psychology, and she worked with over 70 authors bringing them to publication. Cathy wrote and published six award-winning children's books through William Morrow Publishing Company.



**LAURA ELIZABETH SMITH** has enjoyed a long business career and rich family life that took her to Daufuskie Island. Together, the family embraced the wonder they only found there. From her years of family experiences on the island, Laura imagined Mongin Island as the home for her cozy series "The Island Mysteries."

**WRI202: "AN AUTHOR'S JOURNEY: WRITING YOUR OWN SECOND CHAPTER"**

1 Session | Tuesday | Apr 02 | 10:30AM-12:30PM  
In-Person only | Hilton Head campus



Internationally award-winning author/editor Susan Diamond Riley shares the entertaining and inspiring story of the mid-life decision that changed her life and led to the creation of her best-selling Lowcountry-themed Delta & Jax mystery series. Learn the steps involved in researching and writing a novel, securing a publisher, and marketing the final product - as well as how this particular author overcame each of the daunting challenges life threw in her path along the way. This is a discussion class.

**NOTE:** Books will be available for purchase.



**SUSAN DIAMOND RILEY** has worked in the fields of publishing, journalism, and education for nearly 40 years. A member of the South Carolina Writers Association and the Island Writers Network, she is the author of the Delta & Jax Mystery Series and the popular "Greetings from the Lowcountry!" blog.

**WRI203: I'VE GOT SOMETHING TO SAY WRITING YOUR STORY YOUR WAY**

1 Session | Friday | Apr 05 | 2-3:30PM  
In-Person only | Beaufort campus



Do you have a story you want to tell? Join us to explore some writing techniques used for character development and giving voice to those who will share the words you want to say. Learn how to use your environment as inspiration for your work and how to transport readers to "your" place. As an author, Laura Smith will also cover how to build your writing community to support you. If you have ever thought about writing, are already published, or are just curious, join us for a lively discussion!

**WRI204: JOURNALING YOUR WAY TO MORE RESILIENCY**

1 Session | Friday | Apr 12 | 10AM-12N  
In-Person only | Beaufort campus



Through this course, students will learn how to strengthen their emotional, mental, and physical resilience through therapeutic journaling. This type of journaling has been clinically proven to decrease depression, anxiety, and other mood disorders while improving the immune system, cognitive skills, and overall health. It is a technique people can use anytime and anywhere to significantly enhance the quality of their lives.



**SANDRA E. JOHNSON, LMSW**, is a resilience expert, clinical social worker, and noted self-help author. Her book, "The Resilience Journal: 365 Days to Balance and Peace of Mind," has been praised by bestselling authors Sharon Salzberg and Karen Casey as well as influential mindfulness leaders.

**MEMBERSHIP**

Make sure your membership is current through the term otherwise you will not be able to register for classes beyond your membership expiration date.


January 2024 OLLI 2024 Winter/Spring Calendar							
S	Monday	Tuesday	Wednesday	Thursday	Friday	S	
1		2	3	4	5	6	
7	8 10:30 AM-12:30 PM COI200 OLLI Bootcamp HHI	9 <b>Registration Opens</b>	10 10:00 AM-12:00 N COI201 OLLI Bootcamp Beaufort	11 3:00 PM-5:00 PM FILM200 Film Noir Bluffton	12	13 <b>OLLI Day on the courts</b> Bluffton 1:30 PM-5:30 PM	
14	15 7:30 AM-6:30 PM TRIP200 Charleston Museum Offsite	16 10:30 AM-12:30 PM HIS215 Gullah 101 1:00 PM-3:00 PM ART200 Ceramic Making Beaufort	17 10:00 AM-12:30 PM COI202 OLLI Bootcamp Bluffton	18 3:00 PM-5:00 PM FILM200 Film Noir Bluffton	19 10:00 AM-11:30 AM ING200 Clay Mask Wksp Beaufort	20	
21	22 10:00 AM-11:30 AM SCI200 Geology Beaufort 10:00 AM-12:00 N COI203 Learning Bluffton 1:00 PM-2:00 PM HIS200 Hitler Bluffton	23 10:30 AM-12:30 PM HIS215 Gullah 101 1:00 PM-3:00 PM ART200 Ceramic Making Beaufort	24 10:00 AM-12:00 N COI204 Murder 1:00 PM-2:30 PM PHI200 Philosophy Group 1 Bluffton	25 10:00 AM-12:00 N TRA200 France 1:00 PM-3:00 PM ART200 Ceramic Making 3:00 PM-5:30 PM FILM200 Film Noir Bluffton	26 10:00 AM-12:00 N MUS200 Chamber Music 1 10:00 AM-12:00 N TRA201 Key West Bluffton	27	
28	29 10:00 AM-11:30 AM HIS205 Civil War Bluffton 1:00 PM-3:30 PM LIT200 Josephine Beaufort	30 10:30 AM-12:00 N COI205 HHI Affairs 1:00 PM-3:00 PM ART200 Ceramic Making Beaufort	31 10:00 AM-11:30 AM COI206 Education 1:00 PM-3:30 PM LIT200 Josephine Beaufort	<p style="text-align: center;"><b>January is Bring A Friend to Experience OLLI Month</b></p> <p style="text-align: center;">Call the OLLI office to check availability</p>			

February 2024 OLLI 2024 Winter/Spring Calendar

S		Monday		Tuesday		Wednesday		Thursday		Friday		S	
4	5		<b>Random Draw</b>	10:30 AM-12:30 PM ING202 Artificial Intelligence 1:00 PM-2:15 PM HME200 CPR	10:30 AM-12:30 PM ING202 Artificial Intelligence 1:00 PM-2:15 PM HME200 CPR	6	10:30 AM-11:30 AM HIS206 Post Office 1:30 PM-3:30 PM WRI200 Creative Writing 5:00 PM-7:00 PM COI208 Drugs	7	10:30 AM-12:30 PM ING201 Safe and Sound HHI	10:00 AM-12:00 N COI207 Smart Driver Tek 1:00 PM-2:30 PM GAR200 Gardening 101 1:00 PM-4:00 PM FILM201 Kite Runner	2	10:00 AM-12:00 N COI207 Smart Driver Tek 1:00 PM-2:30 PM GAR200 Gardening 101 1:00 PM-4:00 PM FILM201 Kite Runner	3
11	12	8:30 AM-11:30 AM ECO200 Sav Wildlife 10:00 AM-11:30 AM COI209 Behind the Pump 10:00 AM-11:30 AM COI210 Behind the Pump 1:00 PM-3:00 PM HME201 Anxiety-Depression	Offsite Bluffton <i>Livestream</i> HHI Bluffton	10:30 AM-12:30 PM HIS216 Rice/Gullah	10:00 AM-11:30 AM HME202 CPR 10:30 AM-12:00 N HIS217 Port Royal Sound	13	10:00 AM-11:30 AM HME202 CPR 10:30 AM-12:00 N HIS217 Port Royal Sound	14	10:00 AM-12:00 N MUS202 Bird Song 1:30 PM-4:30 PM SPO200 Penn Ctr Paddle	10:00 AM-12:00 N HIS207 Antietam	15	10:00 AM-12:00 N HIS207 Antietam	16
18	19	10:00 AM-12:00 N HIS208 Friendship WWII 1:00 PM-2:30 PM GOV200 Electoral College 1:00 PM-2:30 PM GOV201 Electoral College 1:00 PM-2:30 PM GOV202 Electoral College	Bluffton Bluffton <i>Livestream</i> Beaufort <i>Livestream</i> HHI	10:00 AM-11:30 AM ECO201 Gators 10:00 AM-12:00 N ING203 Yoga 10:00 AM-12:00 N CUL200 Root Veggies 1:00 PM-2:30 PM GAR201 Camellias	10:30 AM-12:00 N ECO202 Bees 1:00 PM-2:30 PM COI211 USCB 3:00 PM-5:00 PM HIS209 Ford Museum	20	10:00 AM-11:30 AM ECO201 Gators 10:00 AM-12:00 N ING203 Yoga 10:00 AM-12:00 N CUL200 Root Veggies 1:00 PM-2:30 PM GAR201 Camellias	21	10:00 AM-12:00 N ING203 Yoga 10:30 AM-12:30 PM SCI201 Earth	10:00 AM-12:00 N ART201 Paint Flowers 10:00 AM-1:00 PM HIS202 Brothers	22	10:00 AM-12:00 N ART201 Paint Flowers 10:00 AM-1:00 PM HIS202 Brothers	23
25	26	10:00 AM-12:00 N ART202 Calligraphy 10:00 AM-12:00 N HIS218 Bluffton 1:00 PM-2:30 PM ECO203 Exploring	Beaufort Bluffton <i>In Person/Zoom</i> Bluffton	10:00 AM-1:00 PM PGD200 Uplifting Film 1:00 PM-2:30 PM GAR201 Camellias 1:00 PM-3:00 PM CUL201 Shrimp Fra Diavolo	10:00 AM-12:00 N ECO204 Ocean Center Tour 1:00 PM-2:30 PM PHI201 Philosophy Group 2	27	10:00 AM-12:00 N ECO204 Ocean Center Tour 1:00 PM-2:30 PM PHI201 Philosophy Group 2	28	10:30 AM-12:30 PM HIS219 1893 Hurricane 1:00 PM-3:00 PM LIT201 Books of SC	10:00 AM-12:00 N Beaufort <i>In Person/Zoom</i> HHI	29	10:30 AM-12:30 PM HIS219 1893 Hurricane 1:00 PM-3:00 PM LIT201 Books of SC	

March 2024						OLLI 2024 Winter/Spring Calendar					
S	Monday	Tuesday	Wednesday	Thursday	Friday	S					
31						2					
3	<b>4</b> 10:00 AM-12:00 N REL200 Jewish History Bluffton 1:30 PM-3:30 PM SCI202 Mouth of Whale HHI Chamber Concert Beaufort 5 - 7 PM	<b>5</b> 10:00 AM-12:00 N HIS210 Buffalo Soldiers Bluffton 10:30 AM-12:30 PM ING204 LEGO® HHI 1:00 PM-2:30 PM HIS211 Am Revolution in SC Beaufort In Person/Zoom	<b>6</b> 10:00 AM-12:00 N HME203 Balance Training Bluffton 10:00 AM-12:30 PM HIS220 Gullah Bus Tour Offsite	<b>7</b> 10:30 AM-12:00 N PHI202 Plato Beaufort 1:30 PM-3:30 PM COM200 Streaming HHI 3:00 PM-5:00 PM REL201 Fate Zoom	<b>8</b> 10:00 AM-1:00 PM HIS202 Brothers Bluffton 1:00 PM-2:30 PM GAR202 Herb Gardening Beaufort	<b>9</b>					
10	<b>11</b> 9:00 AM-10:00 AM HIS221 Honey Hill Bluffton 10:15 AM-1:00 PM HIS222 Honey Hill Tour Offsite	<b>12</b> 11:00 AM-1:00 PM CUL203 Spring Hors d'Oeuvres HHI 1:00 PM-2:30 PM GAR202 Herb Gardening Beaufort	<b>13</b> 10:00 AM-11:30 AM HIS223 Pioneers Bluffton In Person/Zoom	<b>14</b> 10:30 AM-12:00 N PHI202 Plato Beaufort 10:30 AM-12:30 PM PGD201 Purpose HHI 1:00 PM-3:00 PM HIS224 Gullah Family Story Beaufort In Person/Zoom 3:00 PM-5:00 PM REL201 Fate Zoom	<b>15</b> 10:00 AM-1:00 PM HIS202 Brothers Bluffton	<b>16</b>					
17	<b>18</b> 10:00 AM-12:00 N CUL204 Coffee Bluffton 10:30 AM-1:00 PM SPO201 Ebenezer Paddle Offsite 11:00 AM-1:00 PM CUL205 Pizza HHI	<b>19</b> 10:00 AM-3:30 PM ART203 Sketch Draw #1 Beaufort 10:30 AM-12:30 PM HIS225 Native Americans HHI	<b>20</b> 10:00 AM-12:00 N HIS212 Colonial Women Bluffton 10:00 AM-3:00 PM ECO205 Harris Neck Offsite	<b>21</b> 10:30 AM-12:00 N PHI202 Plato Beaufort 10:30 AM-12:30 PM HME204 ALS HHI 3:00 PM-5:00 PM REL201 Fate Zoom	<b>22</b> 10:00 AM-1:00 PM HIS202 Brothers Bluffton 10:00 AM-11:30 AM ART204 Zentangle Bluffton 10:00 AM-3:30 PM ART205 Sketch Draw #2 Beaufort 1:00 PM-3:00 PM WRI201 Published Bluffton	<b>23</b>					
24	<b>25</b> 10:00 AM-12:00 N LEG200 2nd Amendment Bluffton 1:00 PM-3:00 PM IST200 Troubled World Bluffton 3:00 PM-5:00 PM LEG201 Supreme Court Bluffton In Person/Zoom	<b>26</b> 10:00 AM-12:00 N HIS227 BFT Walking Tour Offsite 10:30 AM-12:30 PM HIS226 First Families HHI	<b>27</b> 10:30 AM-12:30 PM HIS203 Int'l Competition HHI 1:00 PM-2:30 PM PHI203 Philosophy Group 3 Bluffton 3:00 PM-4:30 PM EVENT2 Trivia Bluffton	<b>28</b> 10:30 AM-12:00 N PHI202 Plato Beaufort 3:00 PM-5:00 PM REL201 Fate Zoom	<b>29</b> 1:00 PM-3:00 PM SCI203 Mathematics Bluffton	<b>30</b>					

April 2024 OLLI 2024 Winter/Spring Calendar						
S	Monday	Tuesday	Wednesday	Thursday	Friday	S
	<b>1</b> 10:00 AM-11:30 AM SPO202 Athletics 3:00 PM-5:00 PM LEG201 Supreme Court	<b>2</b> 8:30 AM-5:00 PM ECO206 Congaree 10:30 AM-12:30 PM WRI202 Author's Journey	<b>3</b> 10:00 AM-12:00 N HME205 Palliative Care	<b>4</b> 8:00 AM-6:00 PM TRIP201 Middleton Place 10:30 AM-12:30 PM HIS228 Mitchelville 1:30 PM-3:30 PM GAR203 Hot Plants	<b>5</b> 10:00 AM-12:00 N MUS205 Chamber Music 3 10:00 AM-11:30 AM COI212 Shooter 1:00 PM-4:00 PM FILM203 Honeyland 2:00 PM-3:30 PM WRI203 Your Story	<b>6</b> Beaufort Bluffton Bluffton Beaufort
<b>7</b> Chamber Concert Beaufort 5 - 7 PM	<b>8</b> 9:00 AM-3:30 PM HIS229 Fort Pulaski Tour 10:00 AM-11:30 AM HME206 Obesity 3:00 PM-5:00 PM LEG201 Supreme Court	<b>9</b> 10:00 AM-12:00 N ECO207 Pinckney Island 1:00 PM-3:00 PM ART206 Paint Party Vase	<b>10</b> 10:00 AM-12:00 N COI213 Korean Wave 10:00 AM-3:00 PM ART207 Art at USCB	<b>11</b> 10:00 AM-1:00 PM CUL206 TCL and Lunch 1:00 PM-2:30 PM ECO208 Butterflies	<b>12</b> 10:00 AM-12:00 N WRI204 Journaling 10:00 AM-12:00 N COI213 Korean Wave 1:00 PM-2:30 PM ECO209 Birding	<b>13</b> Beaufort Bluffton Bluffton Beaufort
<b>14</b>	<b>15</b> 1:00 PM-3:00 PM ART208 Paris Architecture	<b>16</b>	<b>17</b>	<b>18</b>	<b>19</b>	<b>20</b>
<b>21</b>	<b>22</b> 10:00 AM-12:00 N HIS213 Codebreakers 1:00 PM-3:00 PM ART208 Paris Architecture	<b>23</b> 3:00 PM-4:30 PM EVENT3 Game Day@ OLLI	<b>24</b> 1:00 PM-2:30 PM PHI204 Philosophy Group 4	<b>25</b> 10:00 AM-11:30 AM ECO210 May River - A.M. 12:00 N-1:30 PM ECO211 May River - P.M. 2:30 PM-5:00 PM SPO203 Spider Lily Kayak	<b>26</b>	<b>27</b>
<b>28</b>	<b>29</b> 10:00 AM-11:30 AM BUS200 Crashe\$ 1:00 PM-3:30 PM LIT202 Lady Susan	<b>30</b> 10:00 AM-11:30 AM ECO212 Rural Farming				

S	Monday	Tuesday	Wednesday	Thursday	Friday	S
			1 7:30 AM-5:30 PM TRIP202 Monastery Offsite	2 2:00 PM-8:30 PM ECO213 Shrimpin' Offsite	3 Offsite	4 Kentucky Derby Event Bluffton 5 - 7 PM 
5 1:00 PM-3:30 PM LIT202 Lady Susan Bluffton	6 7 Bluffton	8	9 10:00 AM-12:00 N ECO214 Oak Island Offsite	10	11	

## Refund and Cancellation Policy

OLLI annual memberships are non-refundable. Class and additional supply fees, if applicable, are due at the time of registration. PAYGO (pay as you go) members are eligible to receive a credit\* for class fees on their OLLI account to be used for future class enrollments if the OLLI staff is notified of the cancellation before the start of class.

A \$10 cancellation fee applies to all OLLI courses that have additional fees (supply/trip/tour fees). This fee is not applied against the pay as you go course fee of \$15. Both unlimited and PAYGO members will be assessed a \$10 cancellation fee for canceling a course that has an additional fee any time after enrollment into the class and registration payment. Any balance remaining from the additional fee will be credited\* to a member's OLLI account for future course enrollments.

No credit is provided if cancellation is less than 3 business days before the course/tour. Full forfeiture also applies to those members who do not show up for an enrolled course.

\* OLLI credits are valid for one year.

This page intentionally left blank



# OLLI MEMBERSHIP AND REGISTRATION FORM

## WINTER/SPRING 2024

Name \_\_\_\_\_ Cell Phone: \_\_\_\_\_  
 Yes, please text me class reminders/cancellations/emergency alerts

Address: \_\_\_\_\_

City, ST., Zip: \_\_\_\_\_ Home Phone: \_\_\_\_\_

Development / Community: \_\_\_\_\_ Email: \_\_\_\_\_

Emergency Contact/Relationship: \_\_\_\_\_ Emergency Contact #: \_\_\_\_\_

How did you hear about us?

- |   |                                       |
|---|---------------------------------------|
| <input type="checkbox"/> Friend / Neighbor        | <input type="checkbox"/> OLLI Event   |
| <input type="checkbox"/> OLLI Mailing             | <input type="checkbox"/> Other: _____ |
| <input type="checkbox"/> Social Media / Newspaper |                                       |

**OLLI Annual Membership Required (\$40)**  
Valid for 365 days

Renew my OLLI Membership      OR       New OLLI Membership  
 I have read the Code of Conduct and Refund Policy

### WINTER/SPRING Term Fee Options

<p><b>PAYGO (Pay As You Go) - \$15 per course</b></p> <p><i>Pay for each class separately upon registration through the term.</i></p> <ul style="list-style-type: none"> <li>\$15 per course (<i>In-person or Live on Zoom</i>)</li> <li>Does NOT include OLLI Digital Library access</li> <li>Receive an OLLI credit if you notify staff that you cannot attend before the start of class*<i>Credits can be applied towards a future course</i></li> <li>One-on-one technical support from OLLI</li> <li>Upgrade to Unlimited at any time <i>(Course fees paid will be applied to the Unlimited term fee)</i></li> </ul>	<p><b>UNLIMITED - \$125</b></p> <p><i>*Pre-paying the Unlimited term fee is required before registering for OLLI courses.</i></p> <ul style="list-style-type: none"> <li>Take as many courses In-Person or Live on Zoom as you'd like during the term</li> <li>INCLUDES OLLI Digital Library (ODL) access through May 31, 2024</li> <li>One-on-one technical support for OLLI</li> </ul>
---	--

**PAY-PER-VIEW - \$8 per recording**

- OLLI Digital Library recordings from previous terms
- Pay-per-view access allows you another opportunity to build on your Lifelong Learning with USCB OLLI

Continue to the next page to choose your OLLI courses & complete payment registration.

## OLLI ~ 2024 Winter/Spring Enrollment Sheet

Name \_\_\_\_\_

Phone \_\_\_\_\_

<input type="checkbox"/> <i>In-Person</i> <b>ART200</b> Ceramic Making <b>Supply Fee 30.00</b>	<input type="checkbox"/> <i>In-Person</i> <b>COI202</b> Bootcamp Bluffton	<input type="checkbox"/> <i>In-Person</i> <b>COM200</b> Streaming
<input type="checkbox"/> <i>In-Person</i> <b>ART201</b> Paint Flowers <b>Random Draw</b>	<input type="checkbox"/> <i>In-Person</i> <b>COI203</b> Learning <input type="checkbox"/> <i>Zoom</i>	<input type="checkbox"/> <i>In-Person</i> <b>CUL200</b> Root Veggies <b>Random Draw</b>
<input type="checkbox"/> <i>In-Person</i> <b>ART202</b> Calligraphy	<input type="checkbox"/> <i>In-Person</i> <b>COI204</b> Murder	<input type="checkbox"/> <i>In-Person</i> <b>CUL201</b> Shrimp Diavolo <b>Random Draw</b>
<input type="checkbox"/> <i>In-Person</i> <b>ART203</b> Sketchbook #1 <b>Random Draw</b>	<input type="checkbox"/> <i>In-Person</i> <b>COI205</b> HHI Affairs	<input type="checkbox"/> <i>In-Person</i> <b>CUL203</b> Hors d'Oeuvre <b>Random Draw</b>
<input type="checkbox"/> <i>In-Person</i> <b>ART204</b> Zentangle	<input type="checkbox"/> <i>In-Person</i> <b>COI206</b> Education <input type="checkbox"/> <i>Zoom</i>	<input type="checkbox"/> <i>In-Person</i> <b>CUL204</b> Coffee
<input type="checkbox"/> <i>In-Person</i> <b>ART205</b> Sketchbook #2 <b>Random Draw</b>	<input type="checkbox"/> <i>In-Person</i> <b>COI207</b> Smart Driver Tek	<input type="checkbox"/> <i>In-Person</i> <b>CUL205</b> Pizza <b>Random Draw</b>
<input type="checkbox"/> <i>In-Person</i> <b>ART206</b> Paint - Vase <b>Random Draw</b>	<input type="checkbox"/> <i>In-Person</i> <b>COI208</b> Drugs	<input type="checkbox"/> <i>In-Person</i> <b>CUL206</b> TCL and Lunch <b>Random Draw</b>
<input type="checkbox"/> <i>In-Person</i> <b>ART207</b> Art at USCB	<input type="checkbox"/> <i>In-Person</i> <b>COI209</b> Behind the Pump Bluffton	<input type="checkbox"/> <i>In-Person</i> <b>ECO200</b> Sav Wildlife <b>Random Draw</b>
<input type="checkbox"/> <i>In-Person</i> <b>ART208</b> Paris Architecture	<input type="checkbox"/> <i>In-Person</i> <b>COI210</b> Behind the Pump HHI	<input type="checkbox"/> <i>In-Person</i> <b>ECO201</b> Gators <b>Random Draw</b>
<input type="checkbox"/> <i>In-Person</i> <b>BUS200</b> CrasheS	<input type="checkbox"/> <i>In-Person</i> <b>COI211</b> USCB	<input type="checkbox"/> <i>In-Person</i> <b>ECO202</b> Bees
<input type="checkbox"/> <i>In-Person</i> <b>COI200</b> Bootcamp HHI	<input type="checkbox"/> <i>In-Person</i> <b>COI212</b> Shooter	<input type="checkbox"/> <i>In-Person</i> <b>ECO203</b> Exploring Lowcountry <input type="checkbox"/> <i>Zoom</i>
<input type="checkbox"/> <i>In-Person</i> <b>COI201</b> Bootcamp Beaufort	<input type="checkbox"/> <i>In-Person</i> <b>COI213</b> Korean Wave <input type="checkbox"/> <i>Zoom</i>	<input type="checkbox"/> <i>In-Person</i> <b>ECO204</b> Ocean Center Tour

## OLLI ~ 2024 Winter/Spring Enrollment Sheet

Name \_\_\_\_\_

Phone \_\_\_\_\_

<input type="checkbox"/> <i>In-Person</i> <b>ECO205</b> Harris Neck <span style="float: right; color: red; font-weight: bold;">Random Draw</span>	<input type="checkbox"/> <i>In-Person</i> <b>EVENT3</b> Basketball	<input type="checkbox"/> <i>In-Person</i> <b>GOV202</b> Electoral College HHI
<input type="checkbox"/> <i>In-Person</i> <b>ECO206</b> Congaree <span style="float: right; color: red; font-weight: bold;">Random Draw</span>	<input type="checkbox"/> <i>In-Person</i> <b>EVENT4</b> Kentucky Derby	<input type="checkbox"/> <i>In-Person</i> <b>HIS200</b> Hitler <input type="checkbox"/> <i>Zoom</i>
<input type="checkbox"/> <i>In-Person</i> <b>ECO207</b> Pinckney Isl <span style="float: right; color: red; font-weight: bold;">Random Draw</span>	<input type="checkbox"/> <i>In-Person</i> <b>FILM200</b> Film Noir	<input type="checkbox"/> <i>In-Person</i> <b>HIS201</b> D Day <input type="checkbox"/> <i>Zoom</i>
<input type="checkbox"/> <i>In-Person</i> <b>ECO208</b> Butterflies <span style="float: right; color: red; font-weight: bold;">Random Draw</span>	<input type="checkbox"/> <i>In-Person</i> <b>FILM201</b> Kite Runner	<input type="checkbox"/> <i>In-Person</i> <b>HIS202</b> Brothers
<input type="checkbox"/> <i>In-Person</i> <b>ECO209</b> Birding	<input type="checkbox"/> <i>In-Person</i> <b>FILM202</b> Burnt by the Sun	<input type="checkbox"/> <i>In-Person</i> <b>HIS203</b> Int'l Competition
<input type="checkbox"/> <i>In-Person</i> <b>ECO210</b> May River-A.M. <span style="float: right; color: red; font-weight: bold;">Random Draw</span>	<input type="checkbox"/> <i>In-Person</i> <b>FILM203</b> Honeyland	<input type="checkbox"/> <i>In-Person</i> <b>HIS205</b> Civil War
<input type="checkbox"/> <i>In-Person</i> <b>ECO211</b> May River-P.M. <span style="float: right; color: red; font-weight: bold;">Random Draw</span>	<input type="checkbox"/> <i>In-Person</i> <b>GAR200</b> Gardening 101 <input type="checkbox"/> <i>Zoom</i>	<input type="checkbox"/> <i>In-Person</i> <b>HIS206</b> Post Office
<input type="checkbox"/> <i>In-Person</i> <b>ECO212</b> Rural Farming	<input type="checkbox"/> <i>In-Person</i> <b>GAR201</b> Camellias	<input type="checkbox"/> <i>In-Person</i> <b>HIS207</b> Antietam
<input type="checkbox"/> <i>In-Person</i> <b>ECO213</b> Shrimpin' <span style="float: right; color: red; font-weight: bold;">Random Draw</span>	<input type="checkbox"/> <i>In-Person</i> <b>GAR202</b> Herb Gardening	<input type="checkbox"/> <i>In-Person</i> <b>HIS208</b> Friendship WWII
<input type="checkbox"/> <i>In-Person</i> <b>ECO214</b> Oak Island	<input type="checkbox"/> <i>In-Person</i> <b>GAR203</b> Hot Plants	<input type="checkbox"/> <i>Zoom</i> <b>HIS209</b> Ford Museum
<input type="checkbox"/> <i>In-Person</i> <b>EVENT1</b> Basketball	<input type="checkbox"/> <i>In-Person</i> <b>GOV200</b> Electoral College Bluffton	<input type="checkbox"/> <i>In-Person</i> <b>HIS210</b> Buffalo Soldiers
<input type="checkbox"/> <i>In-Person</i> <b>EVENT2</b> Trivia	<input type="checkbox"/> <i>In-Person</i> <b>GOV201</b> Electoral College Beaufort	<input type="checkbox"/> <i>In-Person</i> <b>HIS211</b> Am Revolution in SC <input type="checkbox"/> <i>Zoom</i>

## OLLI ~ 2024 Winter/Spring Enrollment Sheet

Name \_\_\_\_\_

Phone \_\_\_\_\_

<input type="checkbox"/> <i>In-Person</i> <b>HIS212</b> Colonial Women	<input type="checkbox"/> <i>In-Person</i> <b>HIS225</b> Native Americans	<input type="checkbox"/> <i>In-Person</i> <b>ING200</b> <span style="color: red; font-weight: bold;">Supply Fee Clay Mask Wksp 25.00</span>
<input type="checkbox"/> <i>In-Person</i> <b>HIS213</b> Midway	<input type="checkbox"/> <i>In-Person</i> <b>HIS226</b> First Families	<input type="checkbox"/> <i>In-Person</i> <b>ING201</b> Safe and Sound
<input type="checkbox"/> <i>In-Person</i> <b>HIS215</b> Gullah 101	<input type="checkbox"/> <i>In-Person</i> <b>HIS227</b> BFT Walking Tour	<input type="checkbox"/> <i>In-Person</i> <b>ING202</b> Artificial Intellige
<input type="checkbox"/> <i>In-Person</i> <b>HIS216</b> Rice/Gullah	<input type="checkbox"/> <i>In-Person</i> <b>HIS228</b> <span style="color: red; font-weight: bold;">Random Draw</span> Mitchelville	<input type="checkbox"/> <i>In-Person</i> <b>ING203</b> Yoga
<input type="checkbox"/> <i>In-Person</i> <b>HIS217</b> Port Royal Sound <input type="checkbox"/> <i>Zoom</i>	<input type="checkbox"/> <i>In-Person</i> <b>HIS229</b> <span style="color: red; font-weight: bold;">Random Draw</span> Fort Pulaski Tour	<input type="checkbox"/> <i>In-Person</i> <b>ING204</b> LEGO®
<input type="checkbox"/> <i>In-Person</i> <b>HIS218</b> Bluffton	<input type="checkbox"/> <i>In-Person</i> <b>HME200</b> CPR	<input type="checkbox"/> <i>In-Person</i> <b>IST200</b> <input type="checkbox"/> <i>Zoom</i> Troubled World
<input type="checkbox"/> <i>In-Person</i> <b>HIS219</b> 1893 Hurricane	<input type="checkbox"/> <i>In-Person</i> <b>HME201</b> Anxiety & Depression	<input type="checkbox"/> <i>In-Person</i> <b>LEG200</b> 2nd Amendment
<input type="checkbox"/> <i>In-Person</i> <b>HIS220</b> <span style="color: red; font-weight: bold;">Random Draw</span> Gullah Bus Tour	<input type="checkbox"/> <i>In-Person</i> <b>HME202</b> CPR Bluffton	<input type="checkbox"/> <i>In-Person</i> <b>LEG201</b> Supreme Court
<input type="checkbox"/> <i>In-Person</i> <b>HIS221</b> Honey Hill	<input type="checkbox"/> <i>In-Person</i> <b>HME203</b> Balance Training	<input type="checkbox"/> <i>In-Person</i> <b>LIT200</b> Josephine
<input type="checkbox"/> <i>In-Person</i> <b>HIS222</b> <span style="color: red; font-weight: bold;">Random Draw</span> Honey Hill Tour	<input type="checkbox"/> <i>In-Person</i> <b>HME204</b> ALS	<input type="checkbox"/> <i>In-Person</i> <b>LIT201</b> <input type="checkbox"/> <i>Zoom</i> Books of SC
<input type="checkbox"/> <i>In-Person</i> <b>HIS223</b> <input type="checkbox"/> <i>Zoom</i> Pioneers	<input type="checkbox"/> <i>In-Person</i> <b>HME205</b> Palliative Care	<input type="checkbox"/> <i>In-Person</i> <b>LIT202</b> Lady Susan
<input type="checkbox"/> <i>In-Person</i> <b>HIS224</b> <input type="checkbox"/> <i>Zoom</i> Gullah Family Story	<input type="checkbox"/> <i>In-Person</i> <b>HME206</b> Obesity	<input type="checkbox"/> <i>In-Person</i> <b>MUS200</b> Chamber Music 1

## OLLI ~ 2024 Winter/Spring Enrollment Sheet

Name \_\_\_\_\_ Phone \_\_\_\_\_

<input type="checkbox"/> <i>In-Person</i> <b>MUS201</b> Concert 1	<input type="checkbox"/> <i>In-Person</i> <b>PHI204</b> Philosophy Group 4	<input type="checkbox"/> <i>In-Person</i> <b>TRA200</b> France
<input type="checkbox"/> <i>In-Person</i> <b>MUS202</b> Bird Song	<input type="checkbox"/> <i>In-Person</i> <b>REL200</b> Jewish History	<input type="checkbox"/> <i>In-Person</i> <b>TRA201</b> Key West
<input type="checkbox"/> <i>In-Person</i> <b>MUS203</b> Chamber Music 2	<input type="checkbox"/> <i>Zoom</i> <b>REL201</b> Fate	<input type="checkbox"/> <i>In-Person</i> <b>TRIP201</b> Middleton Place
<input type="checkbox"/> <i>In-Person</i> <b>MUS204</b> Concert 2	<input type="checkbox"/> <i>In-Person</i> <b>SCI200</b> Geology	<input type="checkbox"/> <i>In-Person</i> <b>TRIP202</b> Monastery
<input type="checkbox"/> <i>In-Person</i> <b>MUS205</b> Chamber Music 3	<input type="checkbox"/> <i>In-Person</i> <b>SCI201</b> <input type="checkbox"/> <i>Zoom</i> Earth	<input type="checkbox"/> <i>In-Person</i> <b>WRI200</b> Creative Writing
<input type="checkbox"/> <i>In-Person</i> <b>MUS206</b> Concert 3	<input type="checkbox"/> <i>In-Person</i> <b>SCI202</b> Mouth of Whale	<input type="checkbox"/> <i>In-Person</i> <b>WRI201</b> Published
<input type="checkbox"/> <i>In-Person</i> <b>PGD200</b> Uplifting Film	<input type="checkbox"/> <i>In-Person</i> <b>SCI203</b> Mathematics	<input type="checkbox"/> <i>In-Person</i> <b>WRI202</b> Author's Journey
<input type="checkbox"/> <i>In-Person</i> <b>PGD201</b> Purpose	<input type="checkbox"/> <i>In-Person</i> <b>SPO200</b> <span style="color: red; font-weight: bold;">Random Draw</span> Penn Ctr Paddle	<input type="checkbox"/> <i>In-Person</i> <b>WRI203</b> Your Story
<input type="checkbox"/> <i>In-Person</i> <b>PHI200</b> Philosophy Group 1	<input type="checkbox"/> <i>In-Person</i> <b>SPO201</b> <span style="color: red; font-weight: bold;">Random Draw</span> Ebenezer Paddle	<input type="checkbox"/> <i>In-Person</i> <b>WRI204</b> Journaling
<input type="checkbox"/> <i>In-Person</i> <b>PHI201</b> Philosophy Group 2	<input type="checkbox"/> <i>In-Person</i> <b>SPO202</b> Athletics	
<input type="checkbox"/> <i>In-Person</i> <b>PHI202</b> Plato	<input type="checkbox"/> <i>In-Person</i> <b>SPO203</b> <span style="color: red; font-weight: bold;">Random Draw</span> Spider Lily Kayak	
<input type="checkbox"/> <i>In-Person</i> <b>PHI203</b> Philosophy Group 3		

OLLI MEMBERSHIP: \$40 (If applicable) \_\_\_\_\_ OLLI DONATION: \_\_\_\_\_

Unlimited Term Fee: \$125 \_\_\_\_\_ or \_\_\_\_\_ # of Pay-Go Classes x \$15 = \_\_\_\_\_

Additional Fee(s), if applicable (Supply, Tour, Trip Fees): \$ \_\_\_\_\_ Check # \_\_\_\_\_

**Only remit payment if enrolling in ART200 or ING200**  
All other additional fees will be collected after the random draw selection process.

NAME as it appears on card: \_\_\_\_\_

CREDIT CARD #: \_\_\_\_\_

SECURITY CODE: \_\_\_\_\_

TOTAL AMOUNT  
AUTHORIZED TO BE CHARGED: \$ \_\_\_\_\_

- Visa
- Master Card
- Discover
- American Express

# Thank You Volunteers

Thank you so very much for playing a critical role in OLLI's success. You are an integral part of the OLLI team and fulfilling OLLI's mission

## COMMUNITY AMBASSADORS

Carol Barone	Kathleen Jordan
Michelle Byers	Susan Kossak
Lynda Chatzkel	Laura Marth
Judith Culpepper	Karen Meyer
Joan Davis	Debbie Orbacz
Steven Emery	John Pickens
Fritz Fredeen	Ted Sommers
Beth Giebel	Dick Storm
Dewar Giebel	Linda Taylor
Joanie Harned	Janet Unger
Chris Haro	Tammy Warner
Janet Harris	Helene White
Carol Hartman	

## CURRICULUM TEAMS

### BEAUFORT

Lydia Beason  
Cindy Bledsoe  
Kathleen Jordan  
Barbara Krakehl  
Debbie Reier  
MJ Simmons  
David Simpson

### HILTON HEAD

Rob Baumel  
Annette Claus  
Carolyn Foster  
Frankie Korosi  
Marie McClune  
Linda Tobeson

### BLUFFTON

Marilyn Arseneau  
David Baker  
Greg Blackburn  
Marianne Conti  
Judy David  
Judy Dyer  
Paula Harris  
Diana Heitman  
Bruce Marx  
Mike McCurdy  
Isabel Menendez  
Loretta Novince

## INSTRUCTORS

Cameron Ako	Rabbi Robert Haas
Robert Andreucci	Natalie Harvey
Joanna Angell	Jo Heckert
David Argent	Wendy Wilson Hilty
David Arnal	Michael Hudock
Amanda Ballantyne	Juan Carlos Jimenez
Kim Baretta	Michael Johns
Deborah Barnum	Daniel Johnson
Sean Barth	Sandra Johnson
Victoria Bergesen	Terry Kix
Dick Bjornseth	Barbara Krakehl
Cynthia Bledsoe	Amber Kuehn
Paul Brennan	Mary Lacey
Cathy Brophy	Gerald Larson
Cain Bruce	Brenda Litchfield
Lynn Bryant	Roger Louise
Richard Buffa	Henry Lukas
Mark Callen	Mike MacDonald
Carlos Chacon	Michael Maddaloni
Sandra Chavez	Ellen Malphrus
John Claussen	Bruce Marlowe
Grace Cordial	Bruce Marx
Carlton Dallas	Francine Marz
Andy Danneker	Peter McAllister
Scottie Davis	Janet McCauley
Michael DeWitt Jr.	Marie McClune
William Doar	Jeffrey McQuillen
Robert Durst	Stephen Meyer
Laura Elizabeth	Craig Miller
Jacqueline Emery	Jill Moore
Steven Emery	Jim Nicholson
Bob Gentzler	Bruce Oliver
Mary Kay Gill	Camilla Pagliaroli
Jeff Glazer	Al Pela
Luana Graves	Yvette Marie Pelligrino

Cari Phelps  
Jim & Teri Pohorsky  
Mary Quinn  
Jack Rabbitt  
Michael Reynolds  
Susan Diamond Riley  
Lindsay Smoberg  
Ron Roth  
Joan Ruffino  
Olin Sansbury  
Lawrence Saul  
Bob Scannell  
Cinda Seamon  
Katherine Seeber  
Volkan Sevim  
Eric Skipper  
Victoria Smalls  
Henrik Smit  
Christian Sudduth  
Richard Thomas  
Renarta Tompkins  
Sharon Versyp  
Babet Villena-Alvarez  
Janice Warju  
Shelly Welch  
Craig Whelden  
Kristin Williams  
Mike Young

## SUPPORT VOLUNTEERS

Judy Bailey	Paula Harris	Karen Meyer	Carl Trovato
Rob Baumel	Gwen Ludvigson	Cindy Palko	Yvonne Visser
Marianne Bruno	Buddie Mackintosh	John Pickens	Pat Washnock
Barbara Connery	Art Marcus	Cindy Seidle	Marcia Wilson
Judy Dyer	Laura Marth	Linda Tobeson	
Jean Gardyne	Marie McCline	Anna Trovato	

Interested in volunteering for OLLI? Contact the OLLI staff to explore opportunities.



## WAYS TO GIVE TO USCB OLLI

### **Consider A Gift To OLLI**

Consider making a tax-deductible gift to OLLI in a myriad of ways. Every dollar of your donation goes towards serving membership and creating educational and inspiring programs. Your gift directly impacts the strength and sustainability of USCB OLLI today and on the road ahead. Thank you!

### **A Unique Gift:**

To celebrate a birthday, anniversary or special occasion: to honor the memory of a loved one, friend, or instructor, consider giving a gift in their name and/or a gift certificate for membership and term fee.

### **A Gratitude Gift:**

As a way to say "Thank You" to someone who touched your life or made an impact on you and your community, a donation in their name celebrating lifelong learning is a meaningful gift.

### **Legacy Gift:**

Leave a legacy. Consider OLLI in your will and planned giving opportunities. There are many ways to structure this thoughtful and planned type of gift. As a way to say "Thank You" to someone who touched your life or made an impact on you and your community, a donation in their name celebrating lifelong learning is a meaningful gift.

### **Volunteering:**

Volunteers are essential to the success of OLLI through their assistance on projects, service on curriculum and membership committees and acting as check-in helpers at classes. Volunteering is another currency to strengthen and sustain the USCB OLLI organization.

For more information or to schedule a confidential conversation regarding your tax-deductible donation to USCB OLLI, please contact OLLI Director, Andrea Sisino at 843-208-8249 or [Sisino@uscb.edu](mailto:Sisino@uscb.edu)

Regardless of your donation of financial support or your time THANK YOU!

Thank you for being a part of the USCB OLLI community!

## OLLI LOCATIONS



### BEAUFORT

805 Carteret St., Beaufort, SC 29902

**Office** - Center for the Arts, Room 105

**Classroom** - Center For the Arts, Room 102



### BLUFFTON

1 University Blvd., Bluffton, SC 29909

**Office** - Hargray Building, Room 161

**Classroom** - Hargray Building, Room 156



### HILTON HEAD ISLAND

1 Sand Shark Drive (off Office Park Road)

Hilton Head Island, SC 29928

**Office** - Suite 134

**Classroom** - Room 103

## OSHER LIFELONG LEARNING INSTITUTE AT THE UNIVERSITY OF SOUTH CAROLINA BEAUFORT

Mailing address: 1 University Blvd. Hargray 161, Bluffton, SC 29909

Phone: (843) 208-8247

Website: [www.oli.uscb.edu](http://www.oli.uscb.edu)

Email: [oli@uscb.edu](mailto:oli@uscb.edu)

Follow us on Facebook: [www.facebook.com/olliatuscb](http://www.facebook.com/olliatuscb)