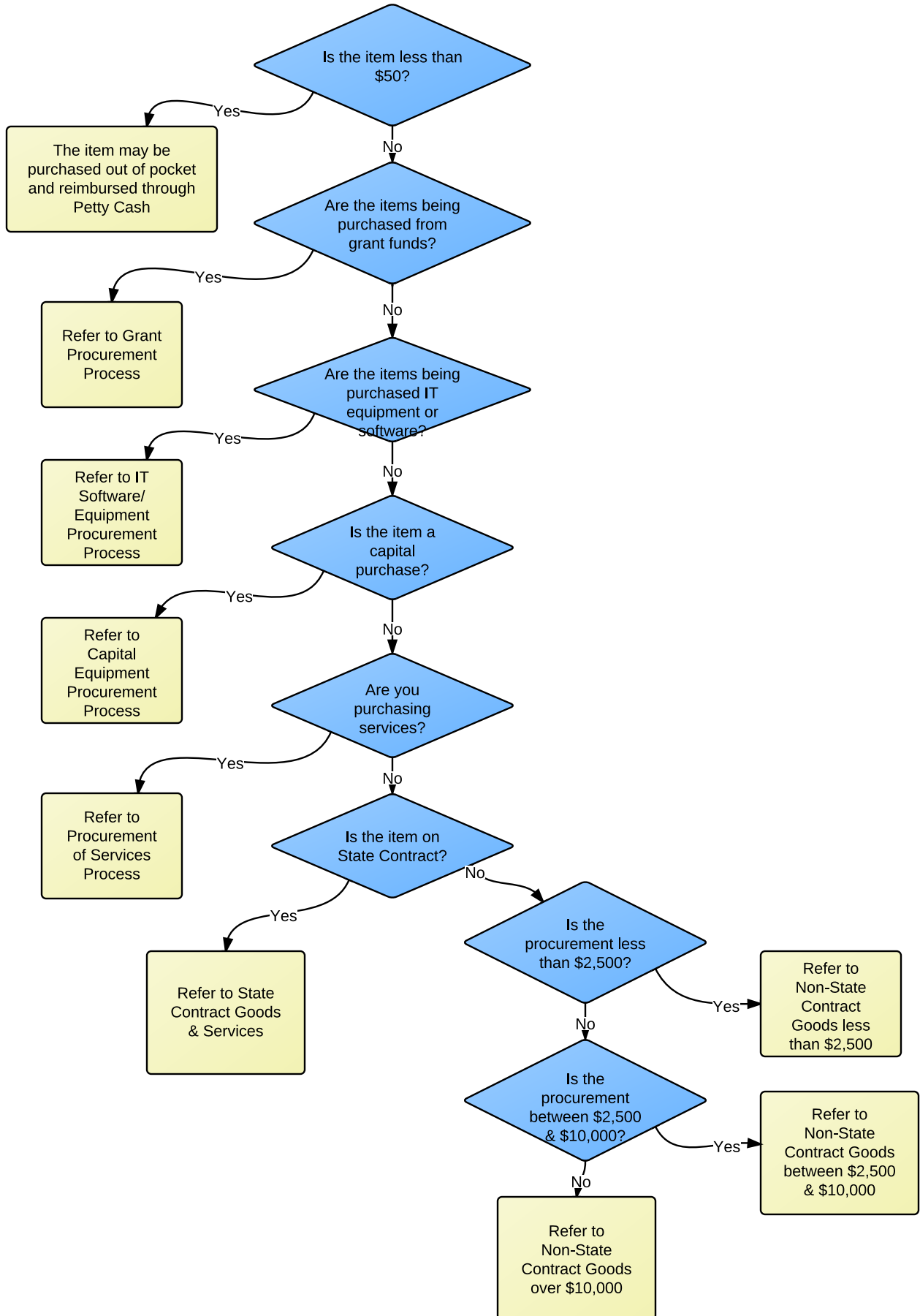
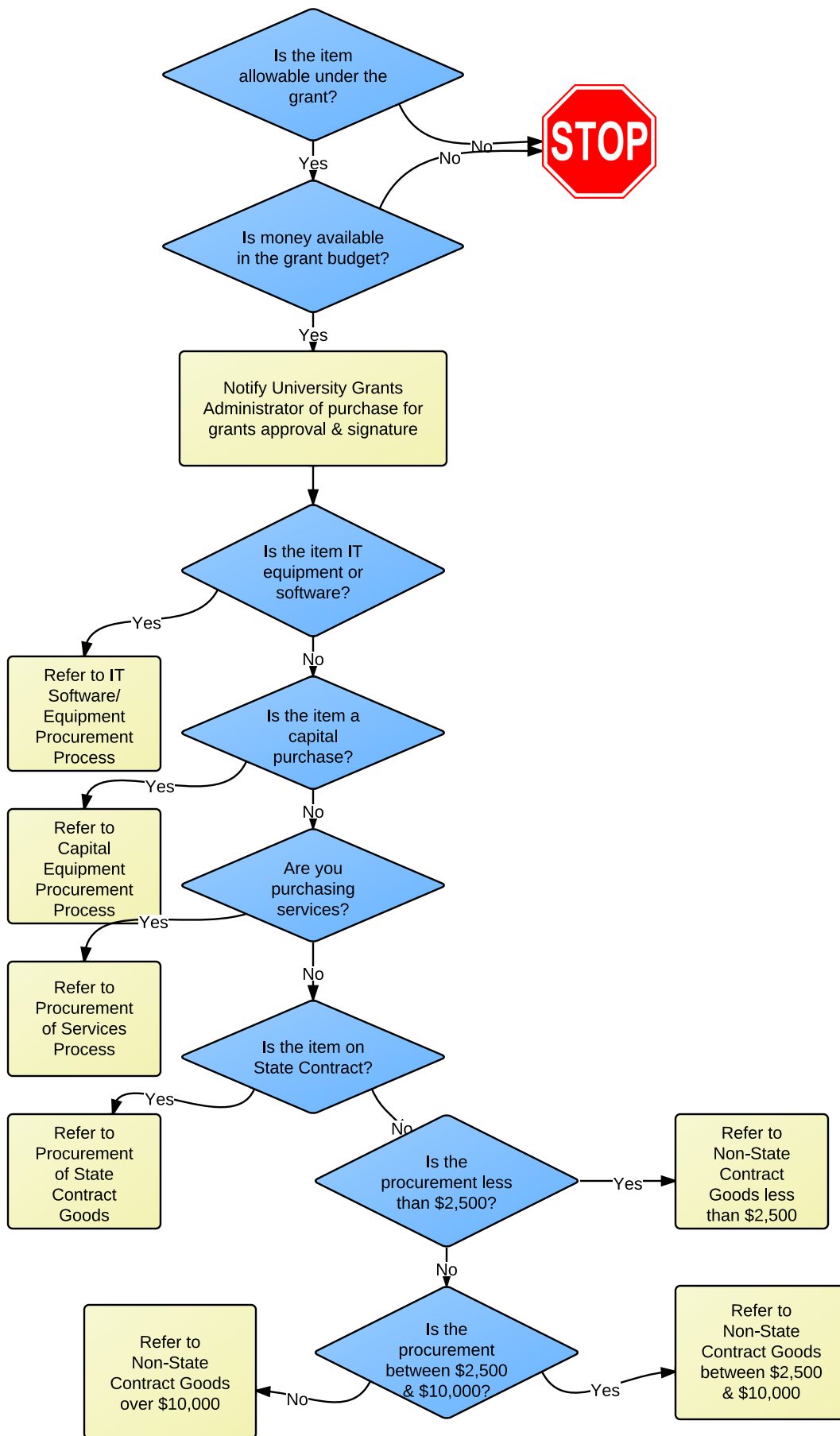


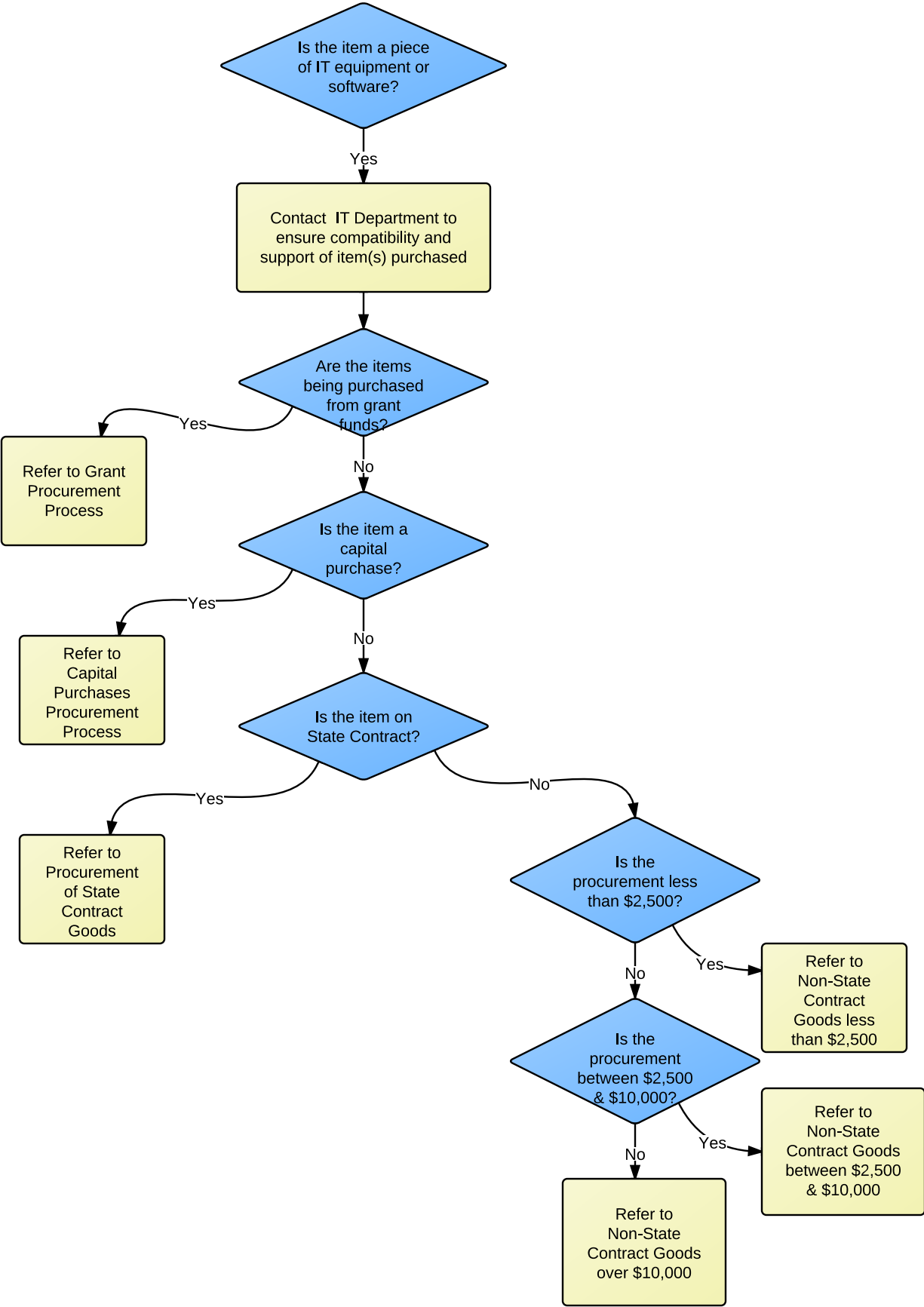
Procurement of Goods and Services



Grant Procurement Process

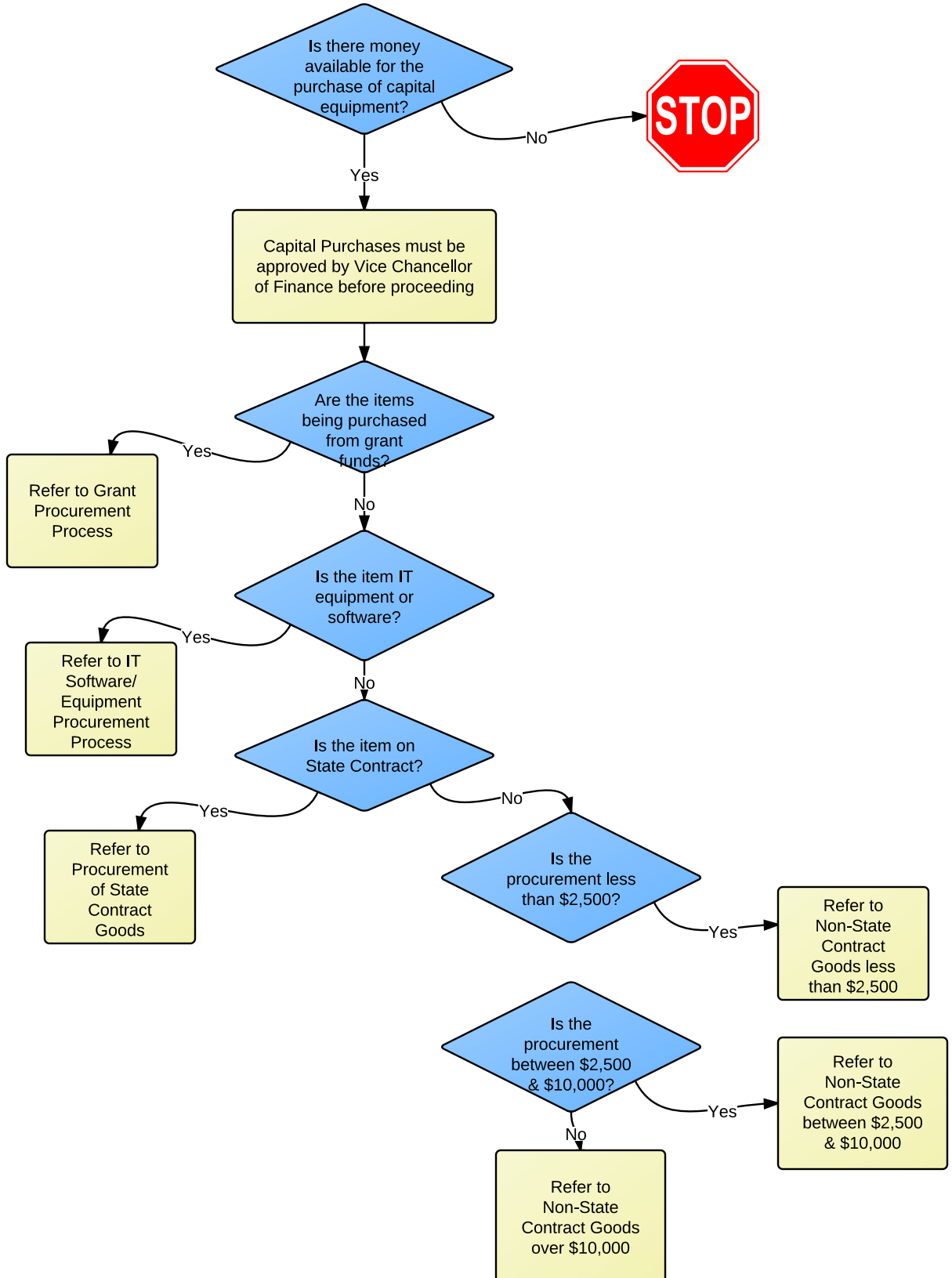


IT Software/Equipment Procurement Process

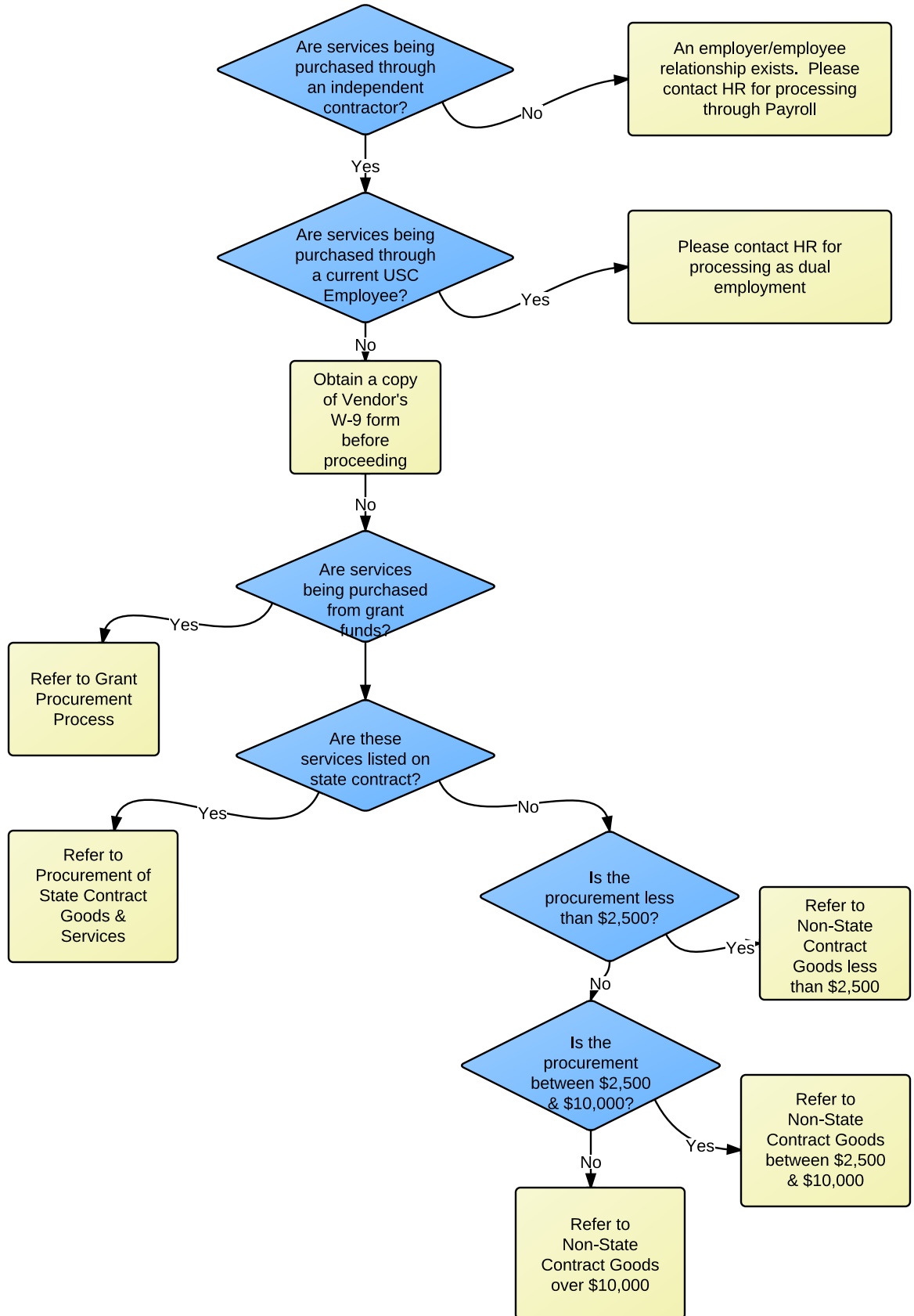


Procurement of Capital Equipment

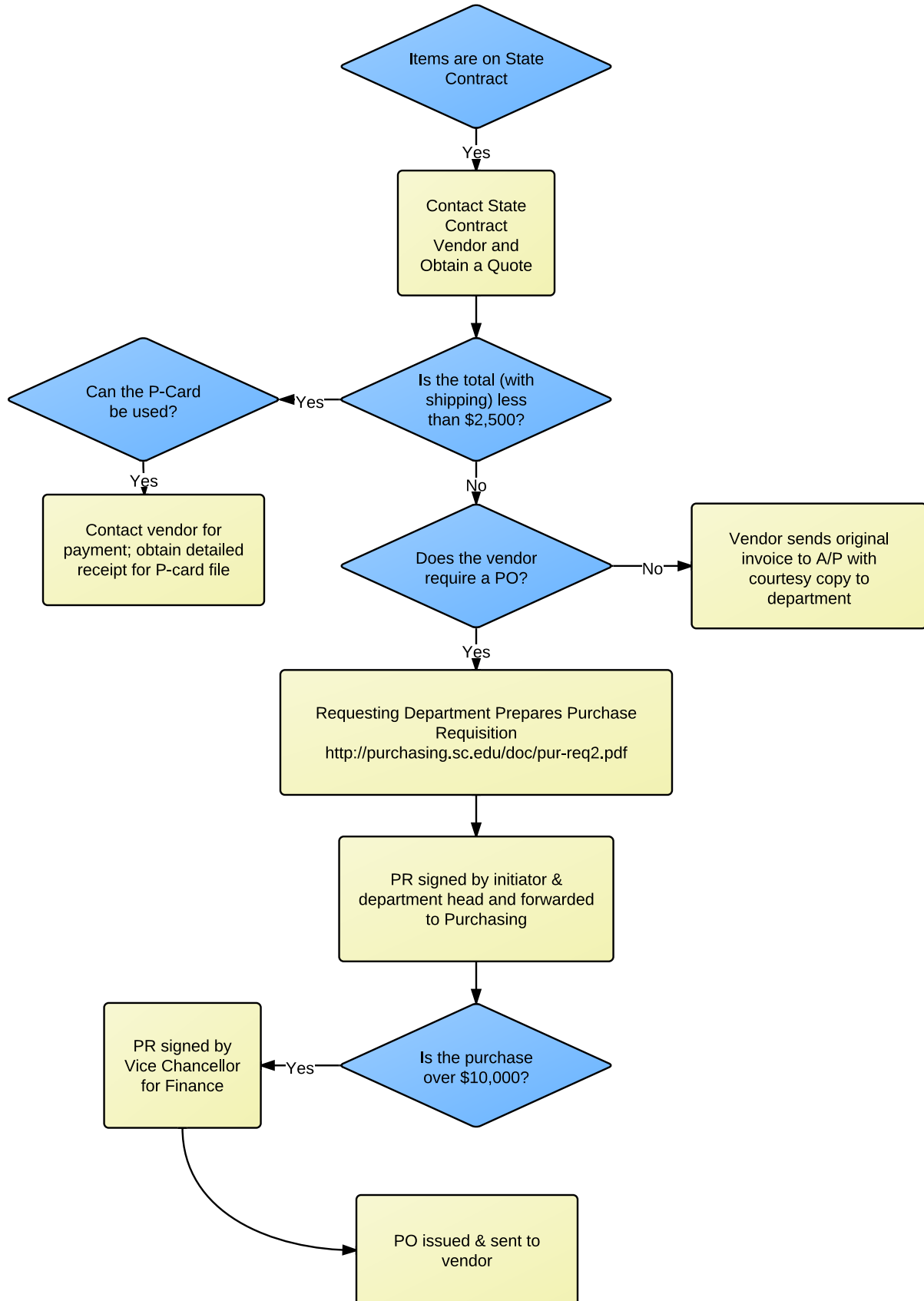
Capital is defined as moveable equipment exceeding \$5,000 or fixed equipment exceeding \$100,000. All construction projects are administered through Columbia and follow Columbia's policies.



Procurement of Services

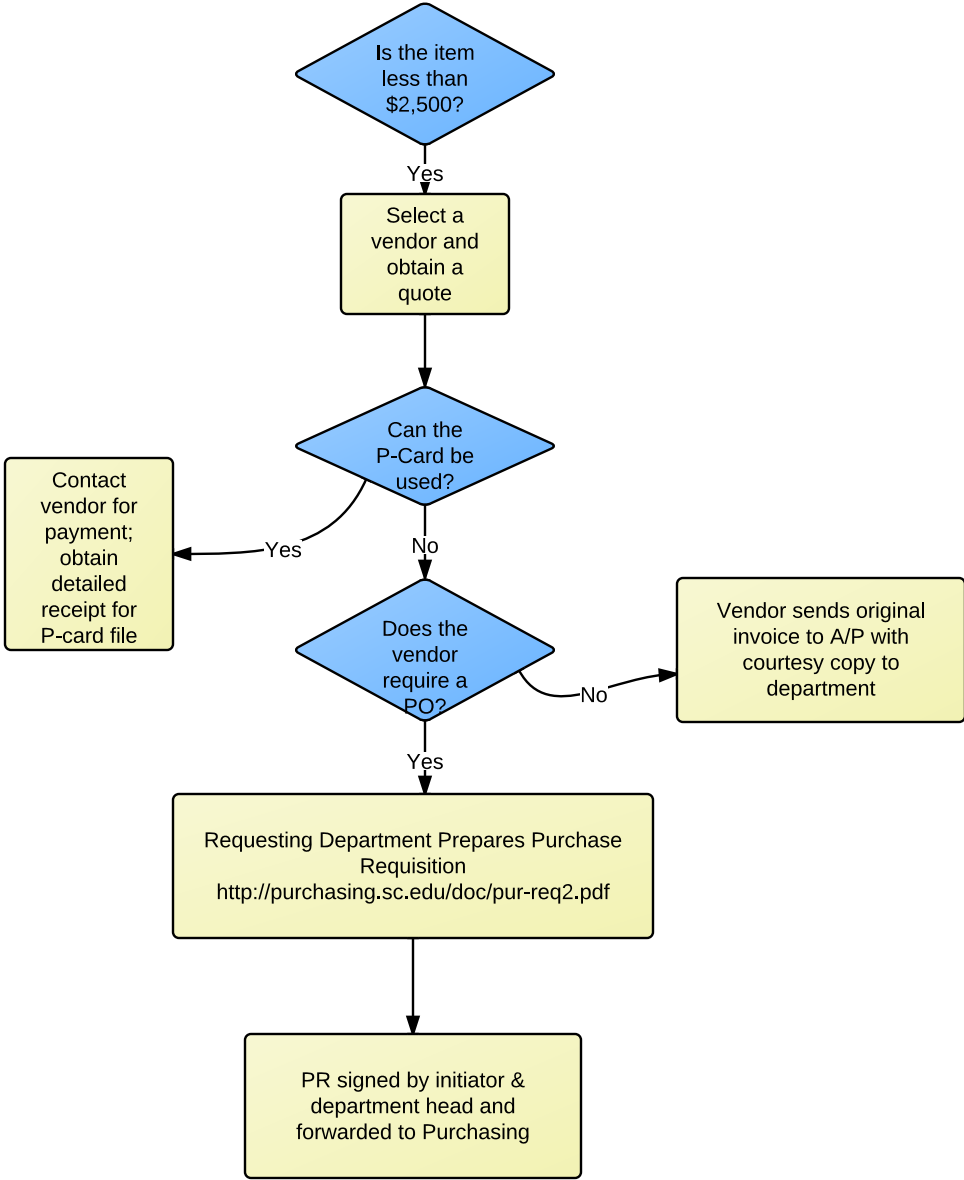


Procurement of Goods/Services on State Contract



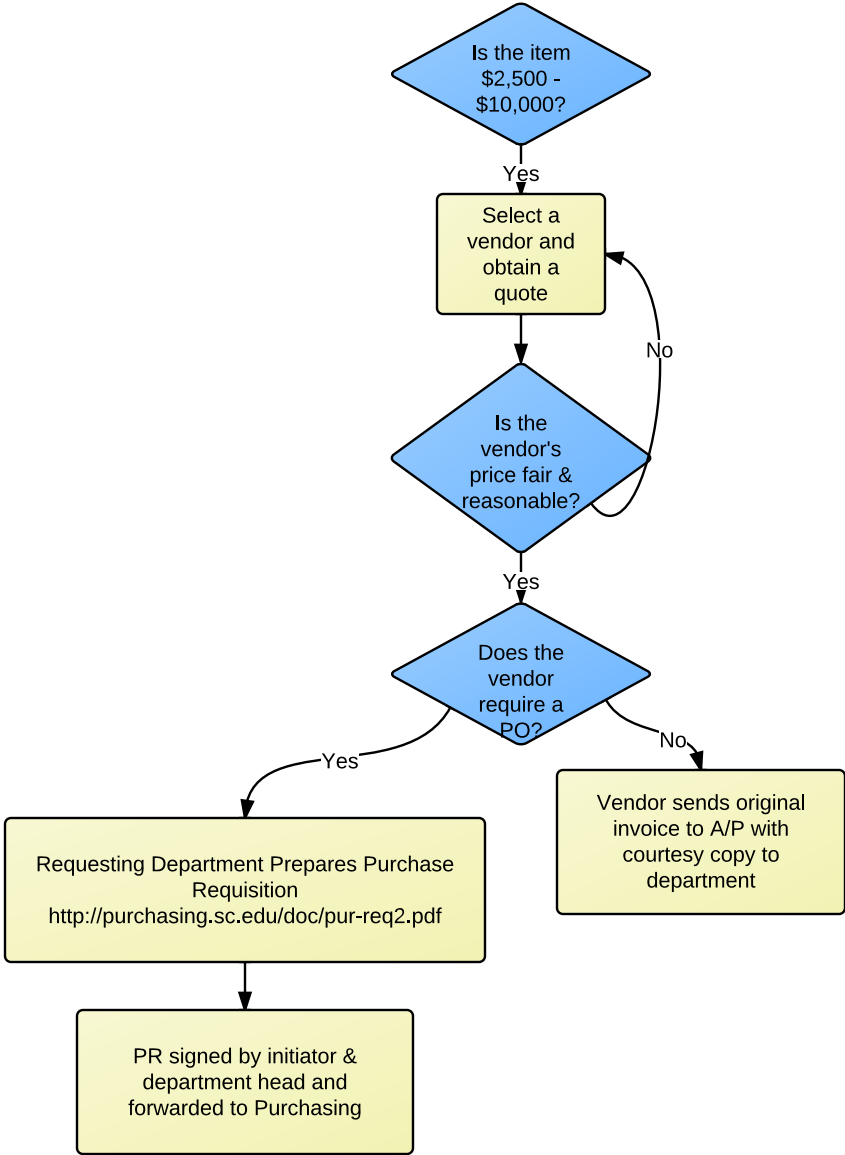
Procurement of Non-State Contract Goods and Services

Price: less than \$2,500



Procurement of Non-State Contract Goods and Services

Price: \$2,500 - \$10,000



Procurement of Non-State Contract Goods and Services

Price: \$10,000 +

